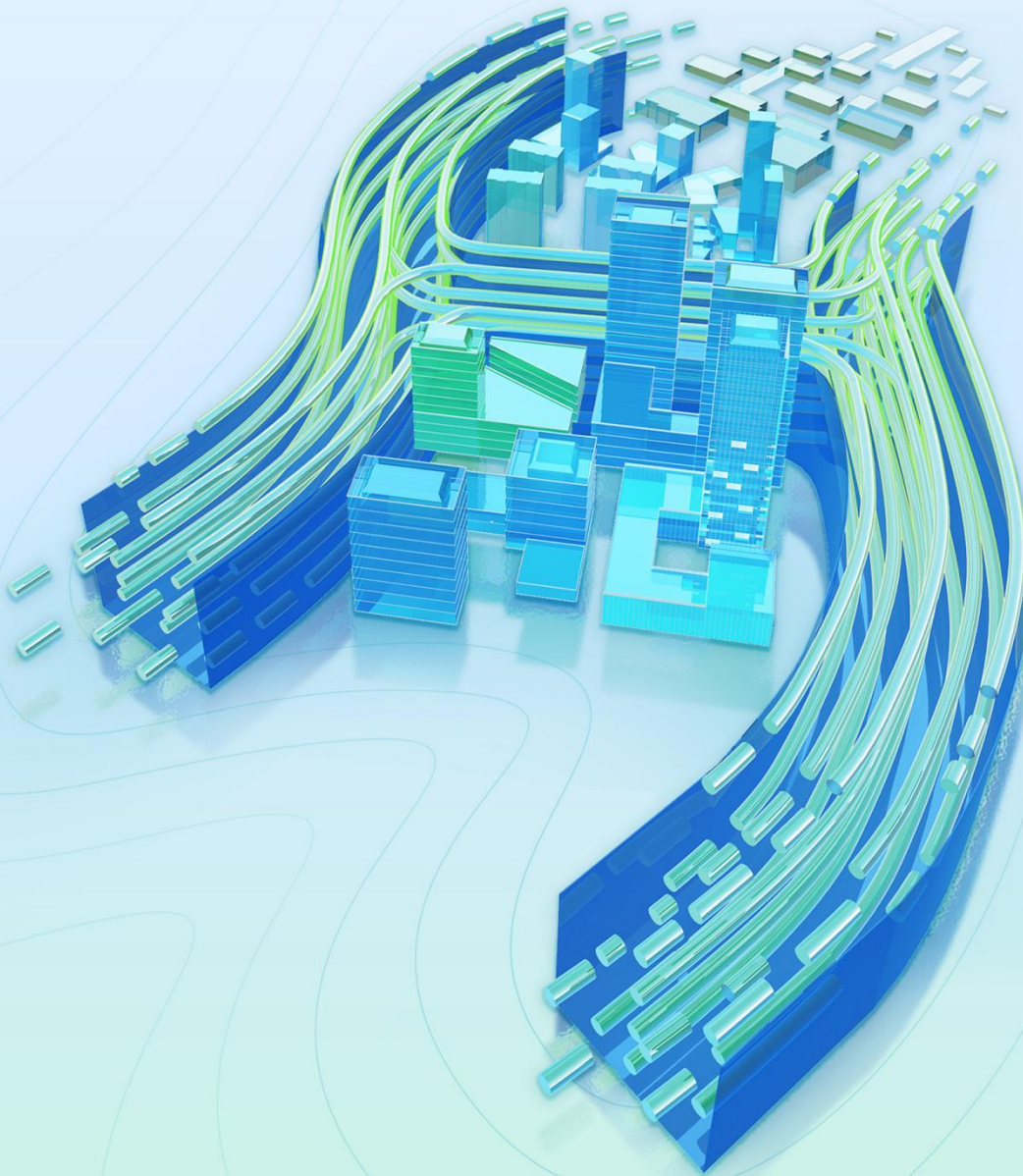




Installation Guide

Houseplan 2.0



Houseplan 2.0 Installation Guide

1. Client System Requirements

Operating System	WINDOWS 7 64-bit/ WINDOWS 10 64-bit
Note	Only support 64-bit windows system

Houseplan 2.0 was primarily designed for the Microsoft Windows 10 operating system; however, it may be compatible with Windows 7 as well. It should be noted that Microsoft has stopped official support for Windows 7, which may result in unpredictable problems such as missing system files or unsupported files. In such cases, these issues may not be able to be resolved.

Tips:

The installation account must have administrative privileges.

Prior to installation, please ensure that security software such as 360 Security Guard is closed.

2. Client hardware configuration

Item	Minimum Configuration	Recommended Configuration
CPU	Intel i5-6 processor	Desktop: Intel i5-9 and above Notebook: Intel i7-8 and above
Monitor	1440×900 true color display	1920×1080 or higher
Video Card	Nvidia GTX1050Ti	Nvidia GTX1660Ti or higher
RAM	16GB	16GB or higher
Hard Disk	4G	8G
Other	Mouse, trackball or other fixed-point device	Mouse, trackball or other fixed-point device

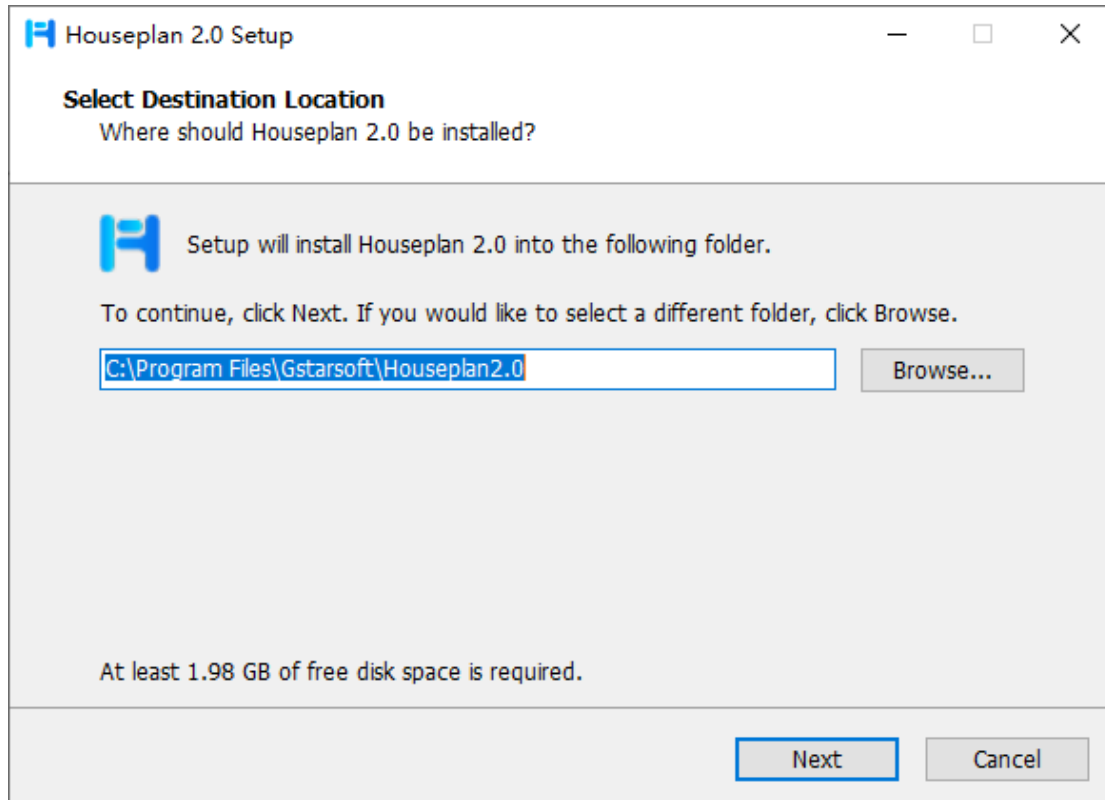
3. Client Installation

Users can visit <http://www.gstarcad.net/houseplan> to download Houseplan 2.0 to your computer or server.

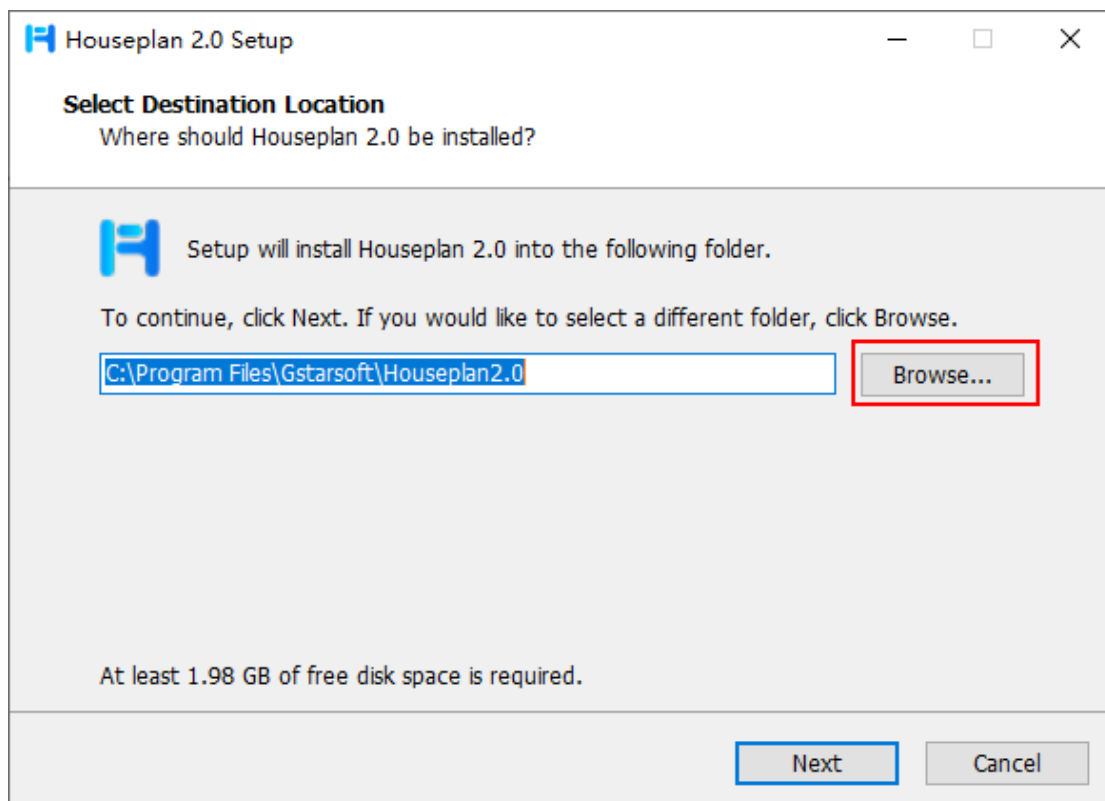
Houseplan 2.0 Install Wizard will guide the user to install the software in the operating system completely and successfully.

Please follow the steps below to install Houseplan 2.0:

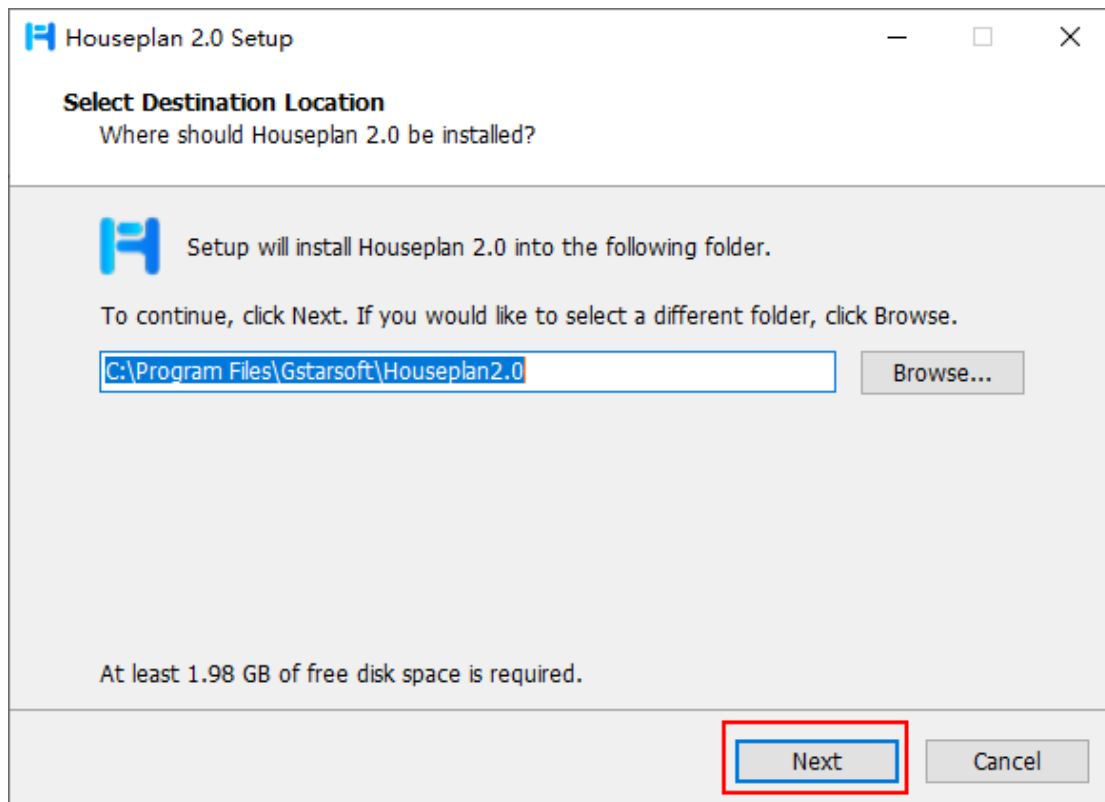
1. Double-click the executable file downloaded and the Houseplan 2.0 Install Wizard dialog box will pop up.



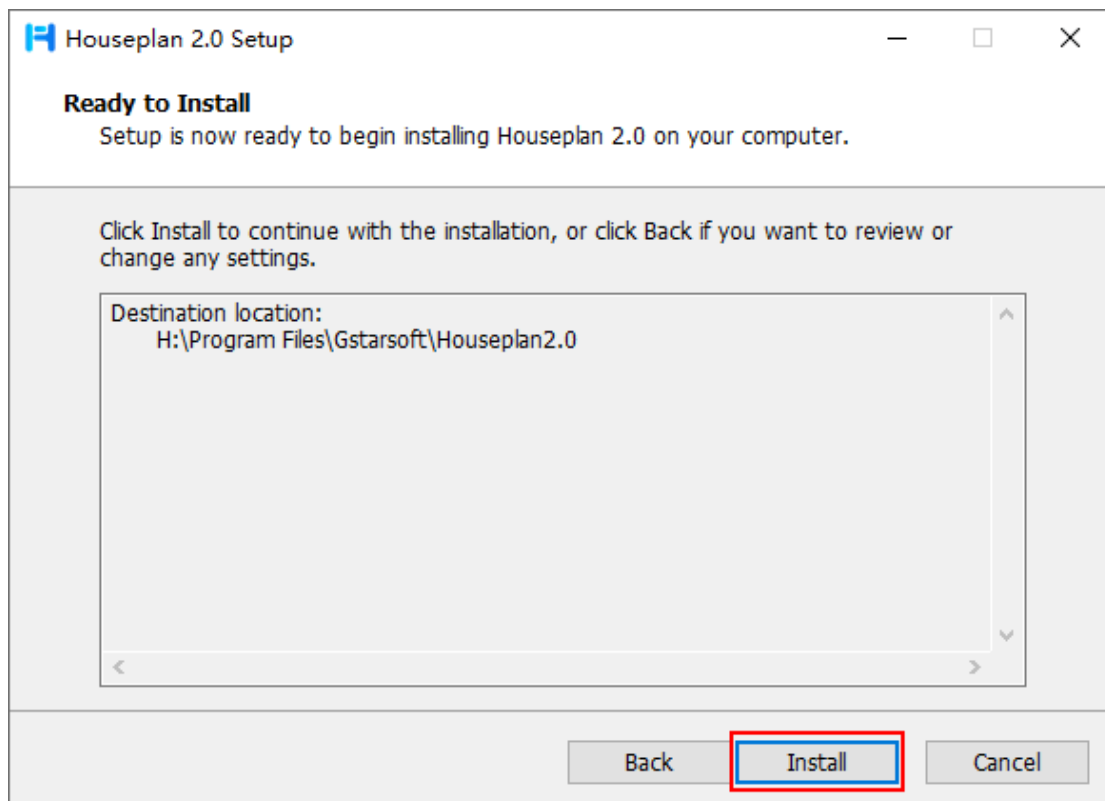
2. Click "Browse" button and choose the destination path where setup will install the files.



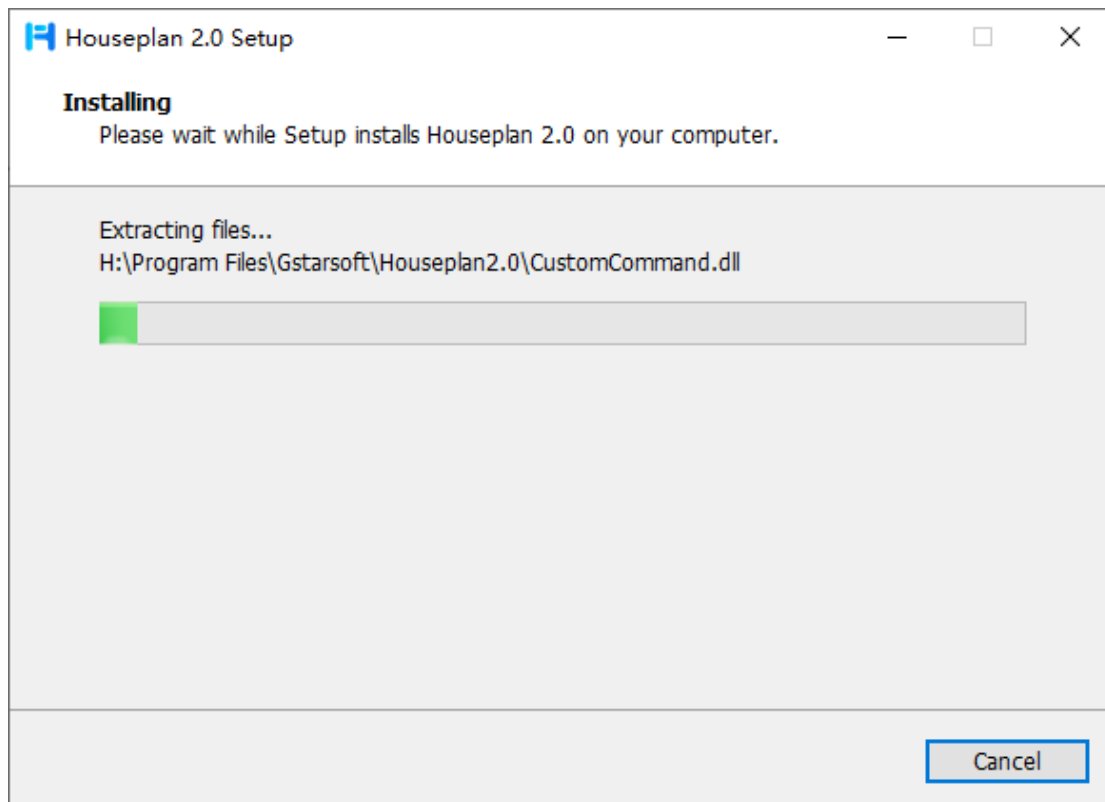
3. Click "Next" button to confirm the installation location.



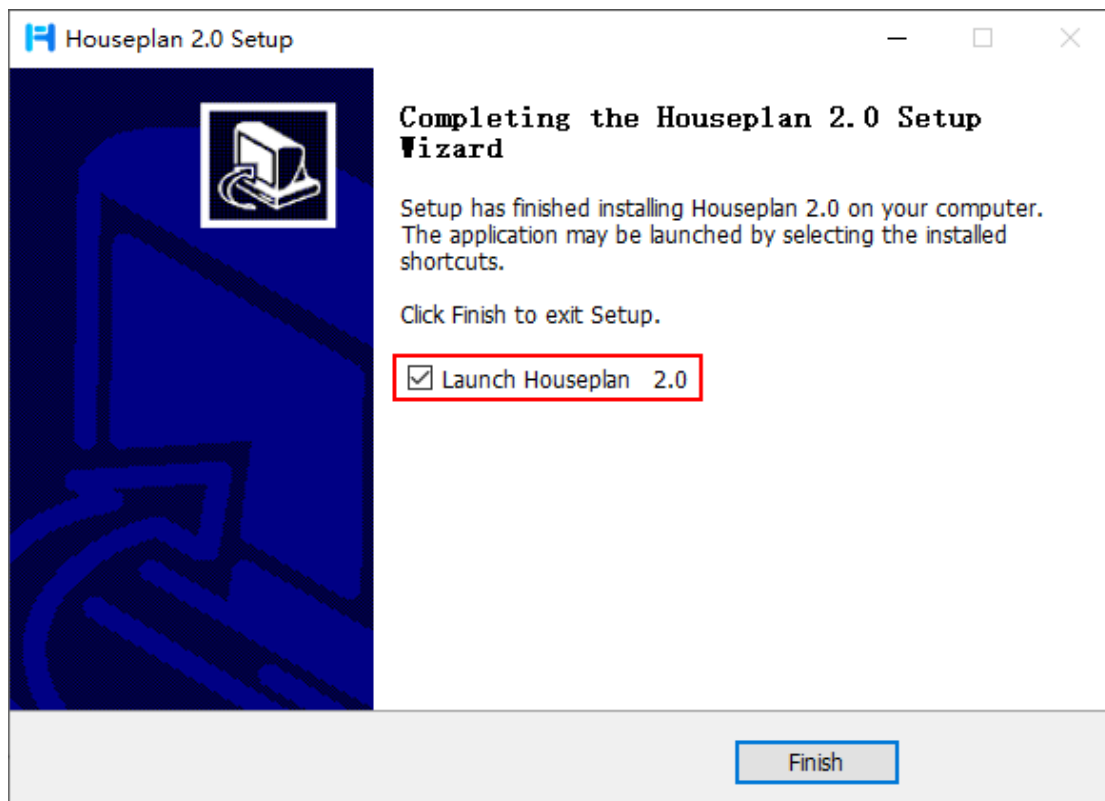
4. Click "Install" button to continue the installation.



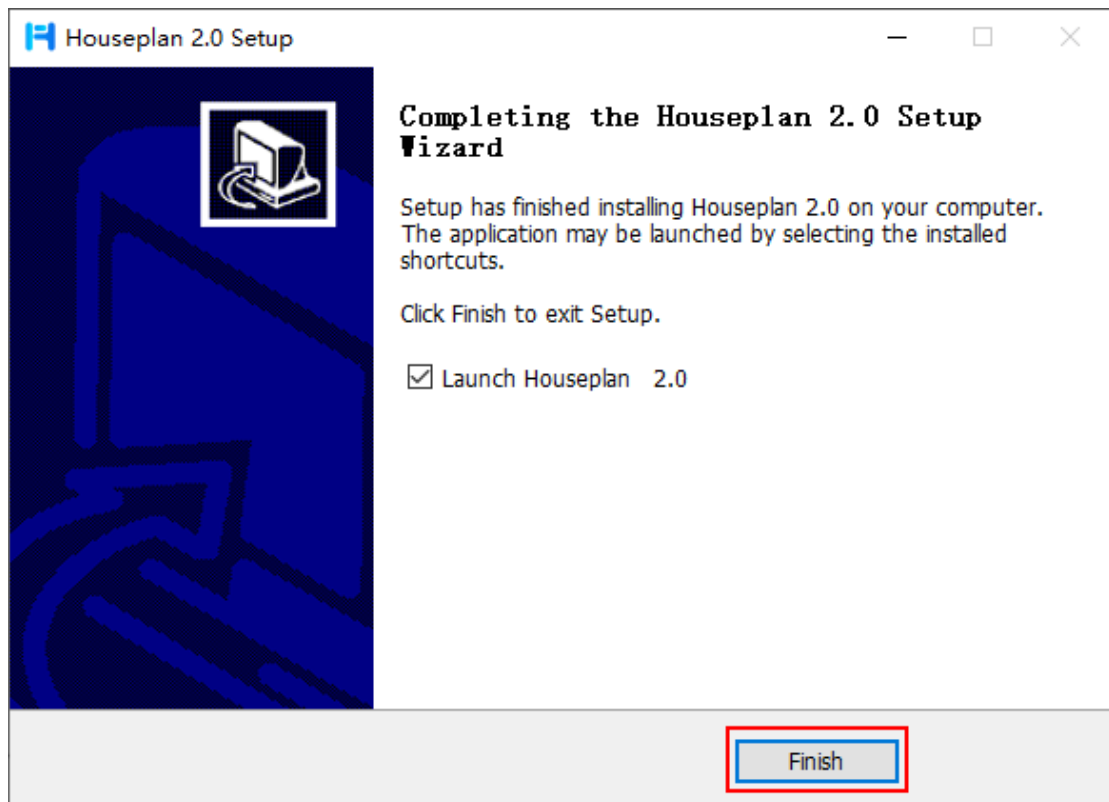
5. You just need to wait for a few minutes for the Overall Progress.



6. Select whether you want to launch the Houseplan 2.0 software.

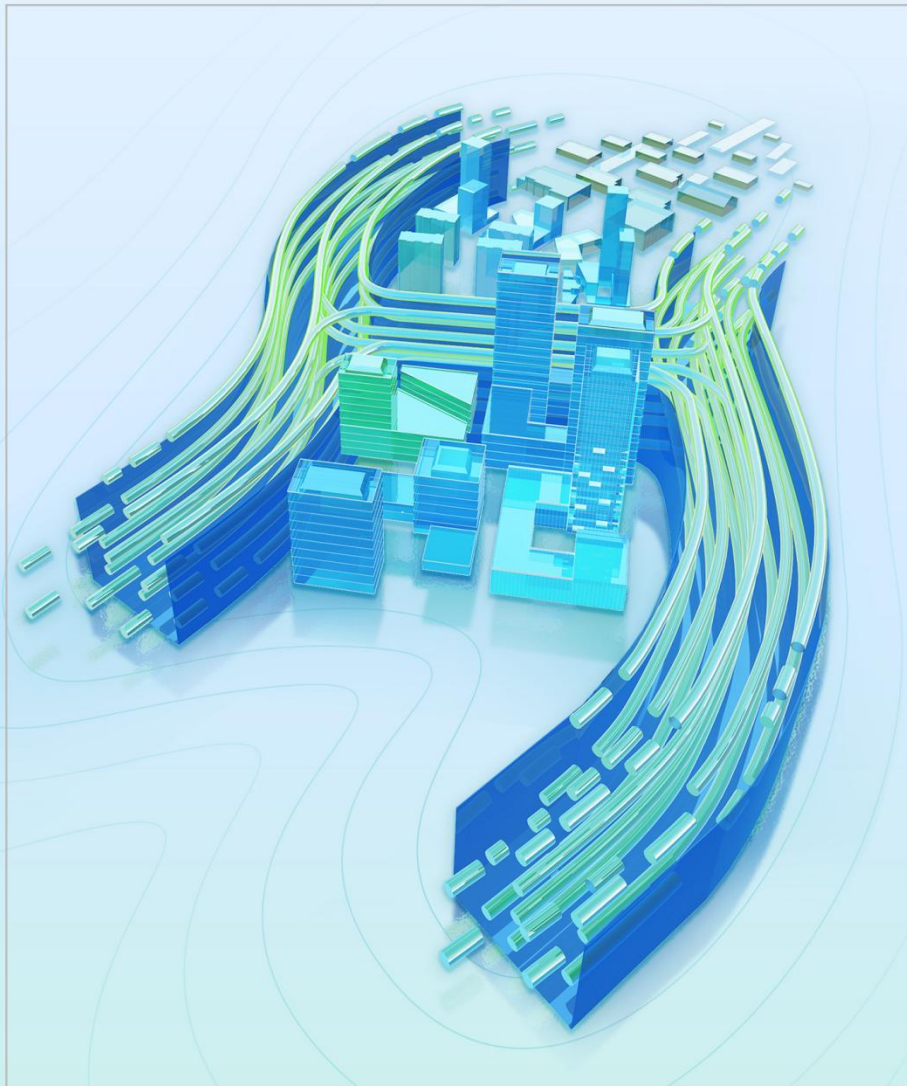


7. Click "Finish" button to exit the wizard. The Houseplan 2.0 software has successfully installed.





Houseplan2.0



■ www.gstarcad.net/houseplan/