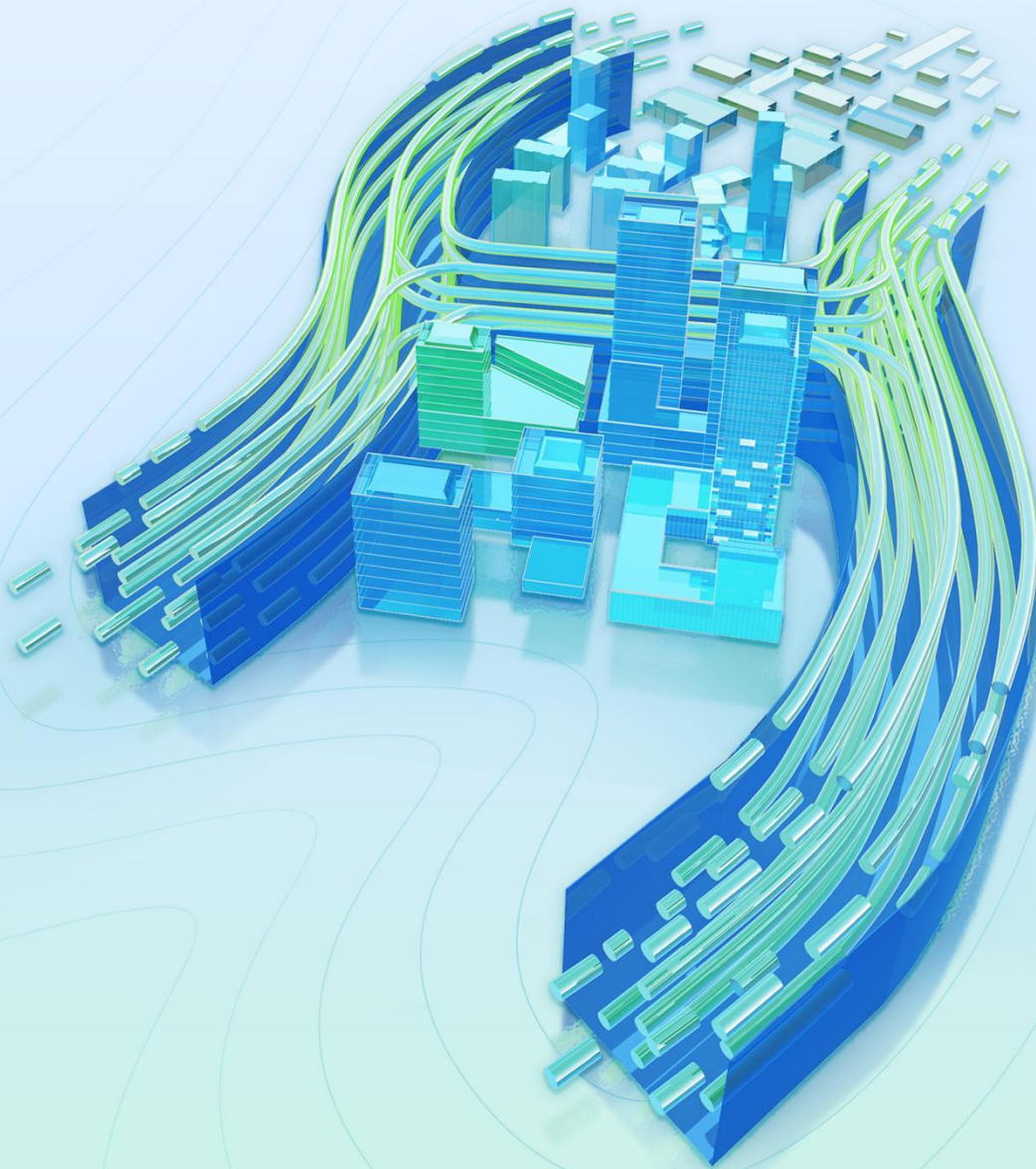




Activation and License Return Guide

Houseplan 2.0

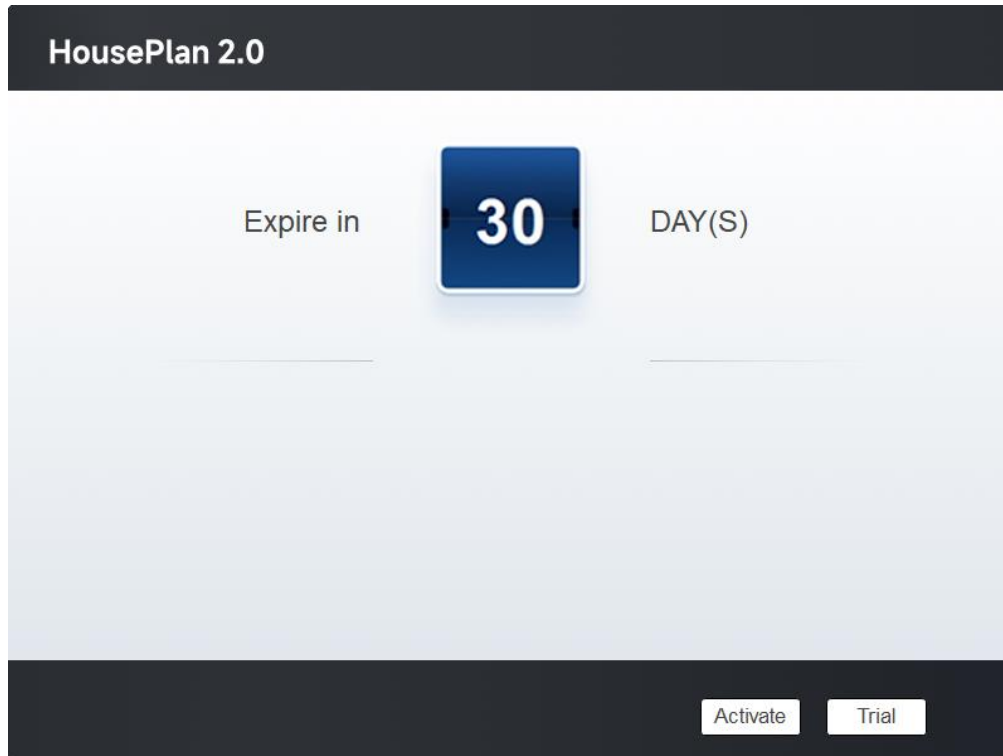


1. License Key Activation.....	1
2. Standalone License Key.....	1
2.1. Online Activation.....	2
2.2. Manual Activation.....	3
3. Standalone License Key Return	8
3.1. Online Return.....	9
3.2. Manual Return.....	10

1. License Key Activation

After you install Houseplan 2.0 and start up software, the system prompts you to choose Activate or Trial.

In both cases, please select a version accordingly first.



If you want to try Houseplan 2.0, just select Trial to get a 30-day trial of the software. During the trial period, the product performs as fully activated.

If you already have a valid license key, you can activate the software directly by selecting Activate to open Houseplan 2.0 License Manager.

2. Standalone License Key

You need a valid standalone license key (serial number e.g. B05E-E707-6D01-0100-24EC-282B-5914-0400) to activate your Houseplan 2.0.

There are two methods provides in License key tab.

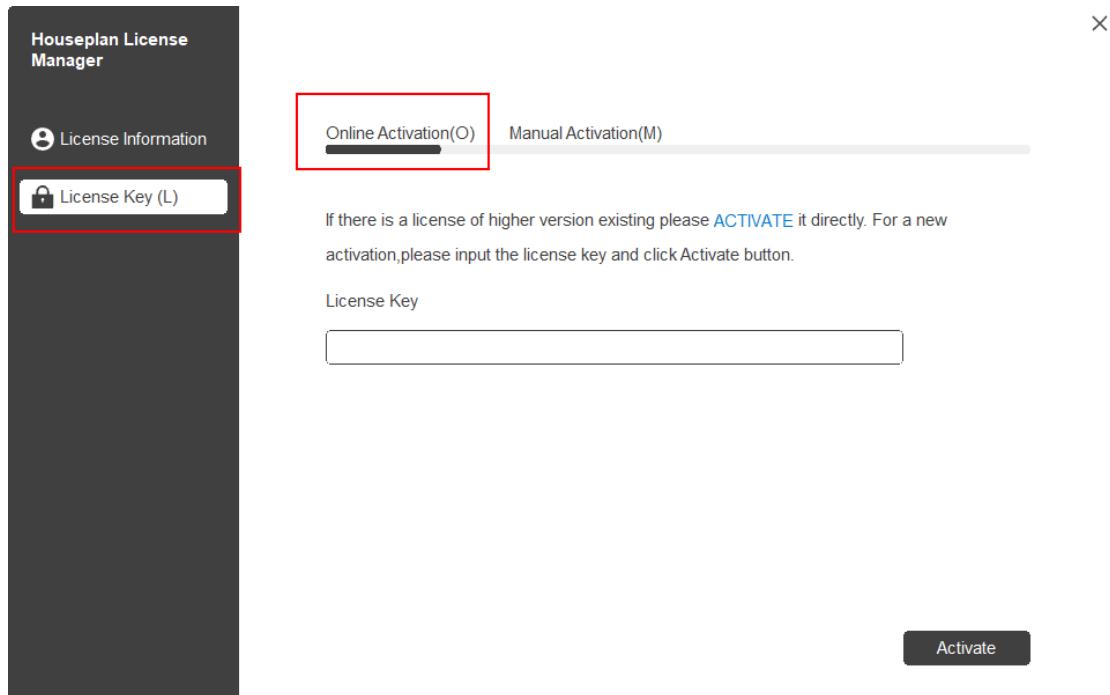
- **Online Activation:** Activate license online

- **Manual Activation:** Activate license manually

2.1. Online Activation

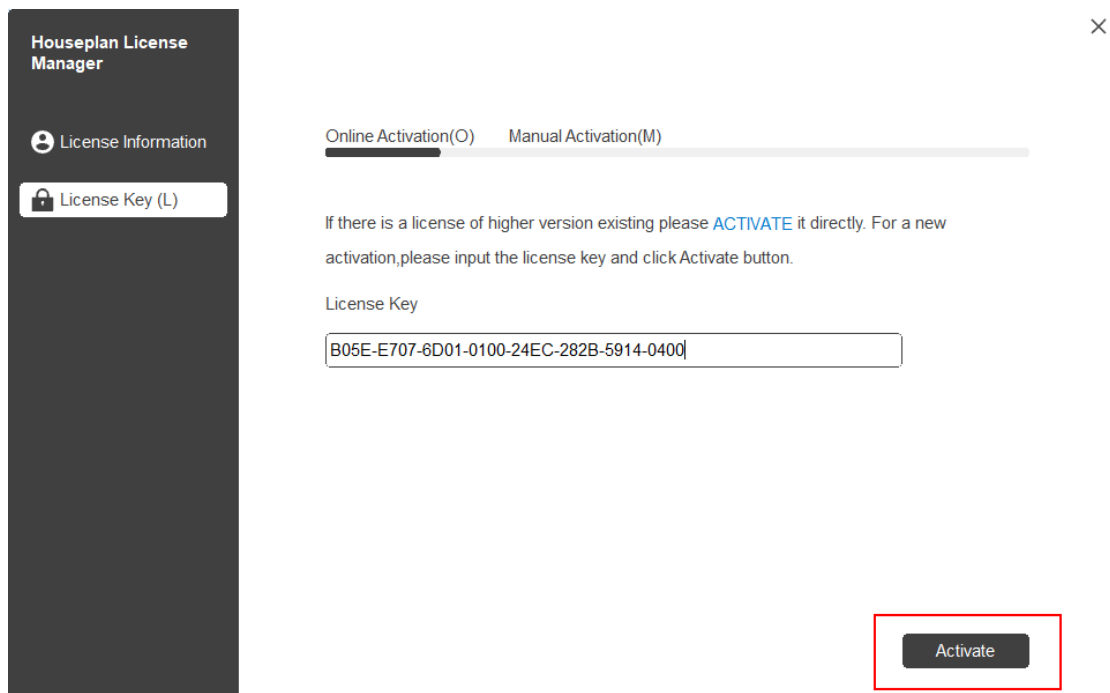
Instruction: Make sure your computer is connected to the internet.

1. Click Online Activation (O).



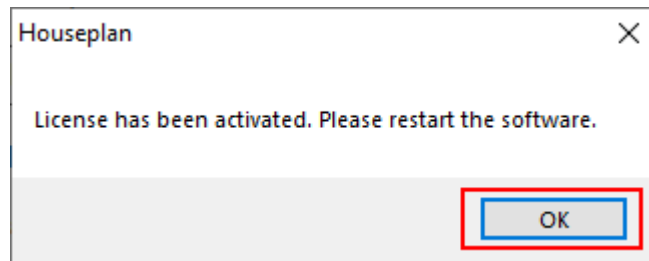
The screenshot shows the 'Houseplan License Manager' interface. On the left sidebar, 'License Information' and 'License Key (L)' are visible. The main area has two tabs: 'Online Activation(O)' and 'Manual Activation(M)'. The 'Online Activation(O)' tab is selected and highlighted with a red box. Below the tabs, there is a text instruction: 'If there is a license of higher version existing please **ACTIVATE** it directly. For a new activation, please input the license key and click Activate button.' Below this is a 'License Key' label and an empty text input field. At the bottom right, there is an 'Activate' button.

2. Input your License Key (serial number) and click the "Activate" button



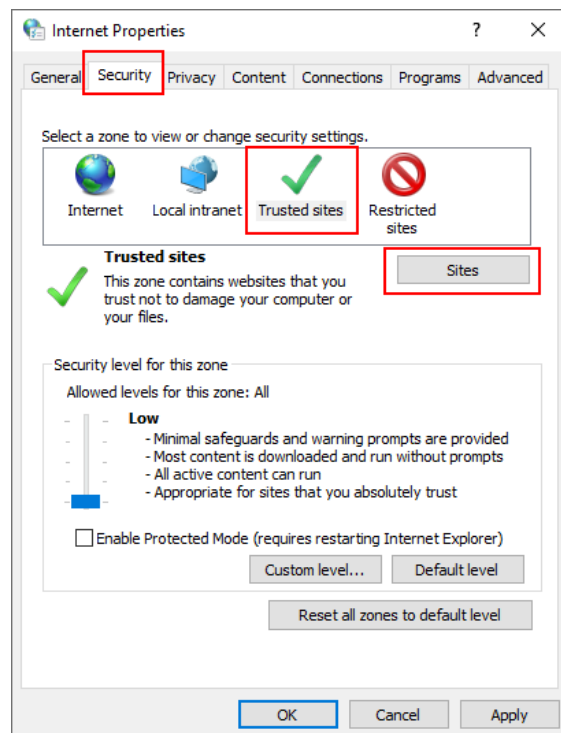
This screenshot is identical to the previous one, but the 'License Key' input field now contains the serial number 'B05E-E707-6D01-0100-24EC-282B-5914-0400'. The 'Activate' button at the bottom right is now highlighted with a red box.

3. After a few seconds the following message appears. Click "OK" button to finish the activation. Then restart your Houseplan 2.0.



Note: For Windows Server operation system, if it prompts "Session does not exist" when activate or return Houseplan 2.0 standalone license online via Houseplan 2.0 License Manager, please check the following solution:

1. Open Internet Explorer (IE) and select Internet Options and then click Trusted sites from Security tab.
 2. Add the following two sites to the trusted sites.
<http://www.gisroad.com>
 3. Click "OK" button to save the security settings.
- Then you can activate or return Houseplan 2.0 standalone license online normally.



2.2. Manual Activation

Instruction: If your computer is not connected to the internet, you can use activation file (xml file) to activate your Houseplan 2.0 manually.

1. Click Manual Activation (M).

Houseplan License Manager

License Information

License Key (L)

Online Activation(O) **Manual Activation(M)**

If there is a license of higher version existing please **ACTIVATE** it directly. For a new activation, please input the license key and move to the next steps.

License Key

1. **GENERATE** request file.
2. Upload request file to <https://license.gstarcad.net/> and get license file (or send request file to your local distributor/reseller from whom you purchased Houseplan products to get license file)
3. **LOAD** the license file and click Activate button.

Activate

2. Input your license key (serial number) and click the “GENERATE” button to get the request file and save it.

Houseplan License Manager

License Information

License Key (L)

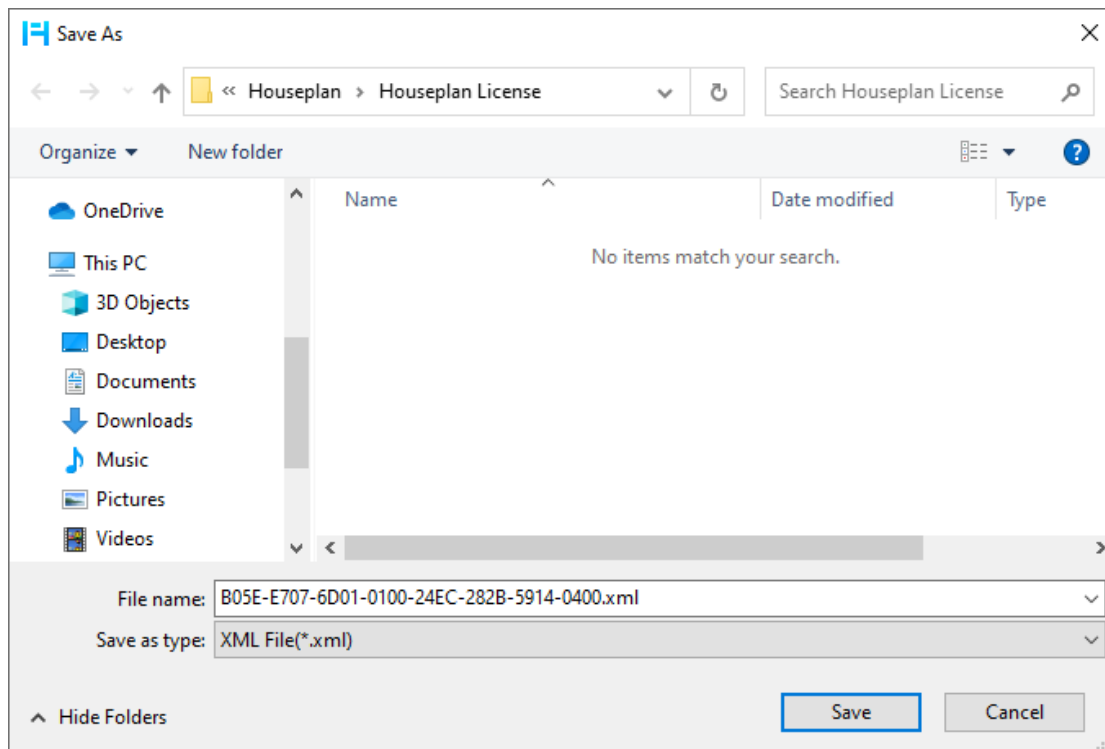
Online Activation(O) **Manual Activation(M)**

If there is a license of higher version existing please **ACTIVATE** it directly. For a new activation, please input the license key and move to the next steps.

License Key

1. **GENERATE** request file.
2. Upload request file to <https://license.gstarcad.net/> and get license file (or send request file to your local distributor/reseller from whom you purchased Houseplan products to get license file)
3. **LOAD** the license file and click Activate button.

Activate



3. There are 2 ways to acquire license file with the saved request file:

- **Option 1: E-mail**

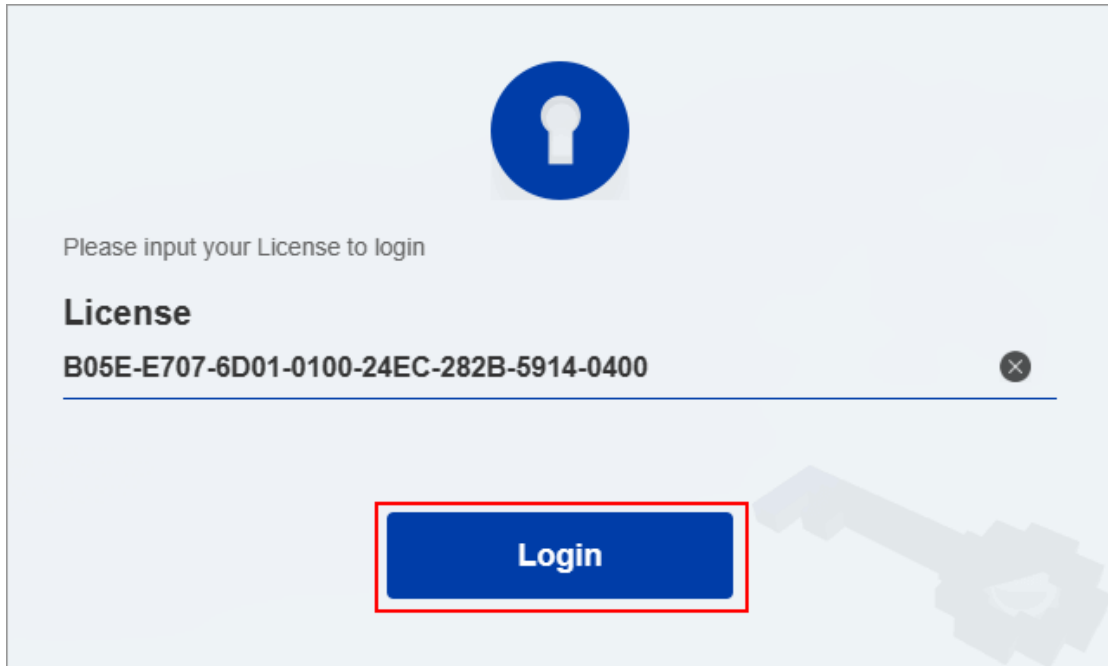
You can send the request file from any computer with internet connected to your local Houseplan 2.0 distributor/reseller from whom you purchased Houseplan 2.0 products to get the license file.

- **Option 2: Online Service**

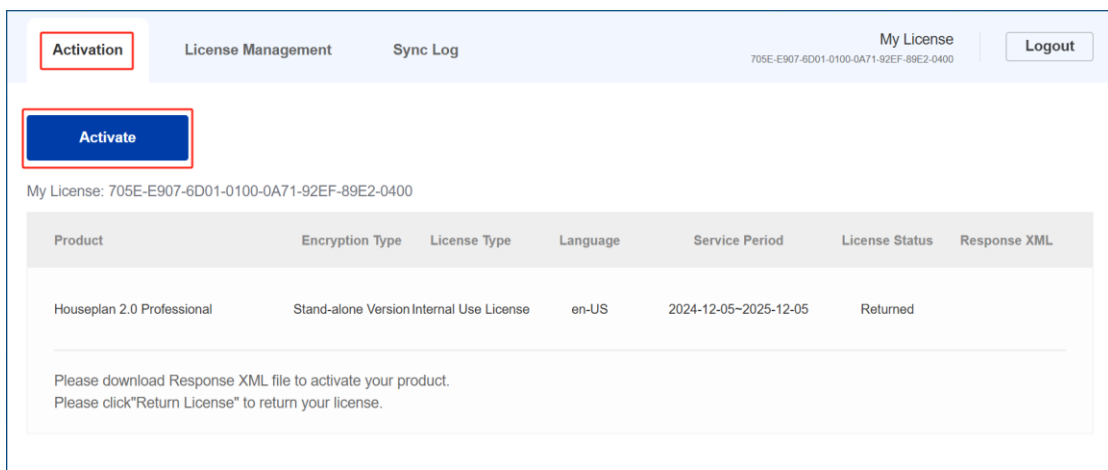
You can access Houseplan 2.0 online service center from any computer with internet connected to download the license file.

(1) Login to Houseplan 2.0 online service center: <https://license.gstarcad.net/>

(2) Input your license key (serial number) and click the “Login” button to continue.



(3) In Activation tab, click the “Activate” button to continue.



(4) Click the “Choose File” button and select the request file you have saved and click the “Submit” button to continue.

⏪ **Activation** My License
B05E-E707-6D01-0100-24EC-282B-5914-0400 Logout

My License: B05E-E707-6D01-0100-24EC-282B-5914-0400

Request XML File

Choose File

Upload File: B05E-E707-6D01-0100-24EC-282B-5914-0400.xml

Load the credible request XML activation file which created at user client

Submit

Find out the file and click it to submit

(5) Click the “Download” button and save the license file (Response XML File). We recommend you to store the license file to your USB flash drive.

Activation License Management Sync Log My License
705E-E907-6D01-0100-0A71-92EF-89E2-0400 Logout

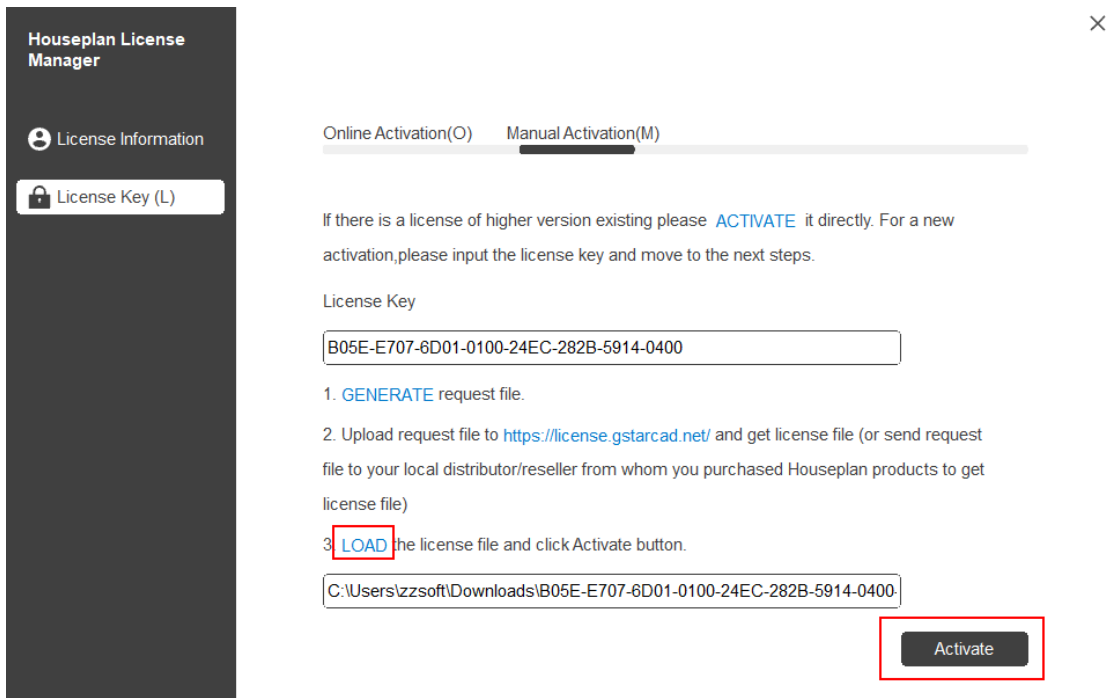
Activate

My License: 705E-E907-6D01-0100-0A71-92EF-89E2-0400

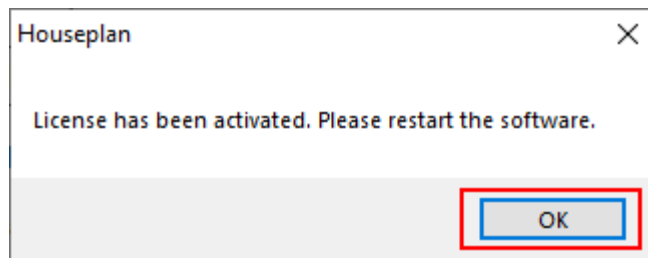
Product	Encryption Type	License Type	Language	Service Period	License Status	Response XML
Houseplan 2.0 Professional	Stand-alone Version	Internal Use License	en-US	2024-12-05~2025-12-05	Activated	<div style="border: 2px solid red; padding: 2px; display: inline-block;"> </div>

Please download Response XML file to activate your product.
Please click“Return License” to return your license.

4. Back to your computer and find out Houseplan 2.0 License Manager from Help-Register in Houseplan 2.0, please click the “LOAD” button and select the license file you have just downloaded and saved from another computer, and then click the Activate button.



5. After a few seconds the following message window appears. Click the "OK" button to finish the activation. Then restart your Houseplan 2.0.

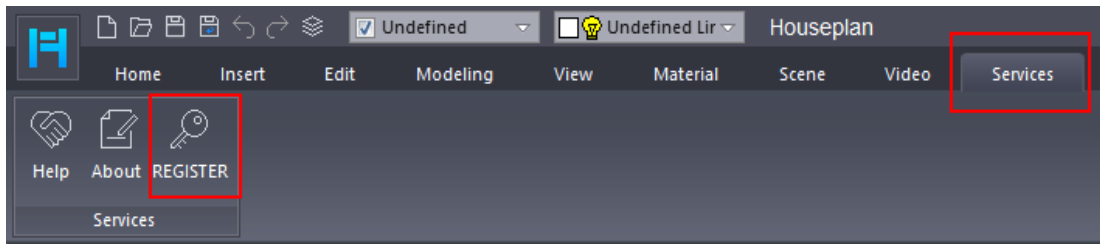


3. Standalone License Key Return

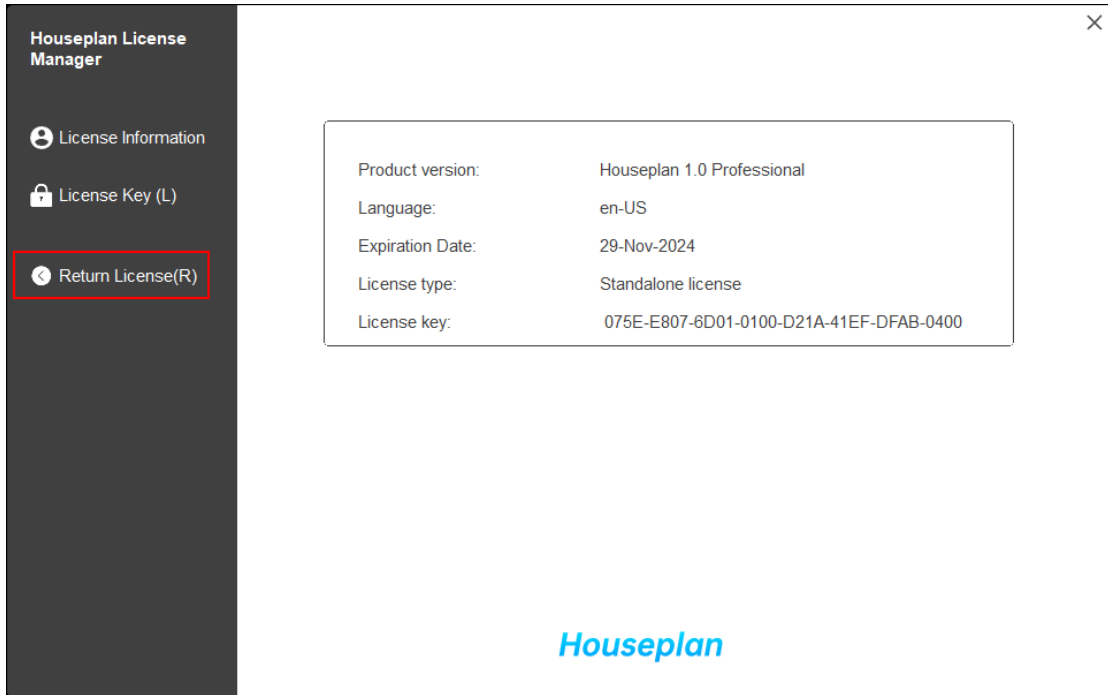
When you are going to change another computer or upgrade your system, to ensure you can use this software again after you changing the system, you need to return license before you change your system, hard disk or main board.

Online Return: Make sure your computer connected to the internet. You can return your license key online.

Manual Return: There is no need of internet connection. You can manually return your license key



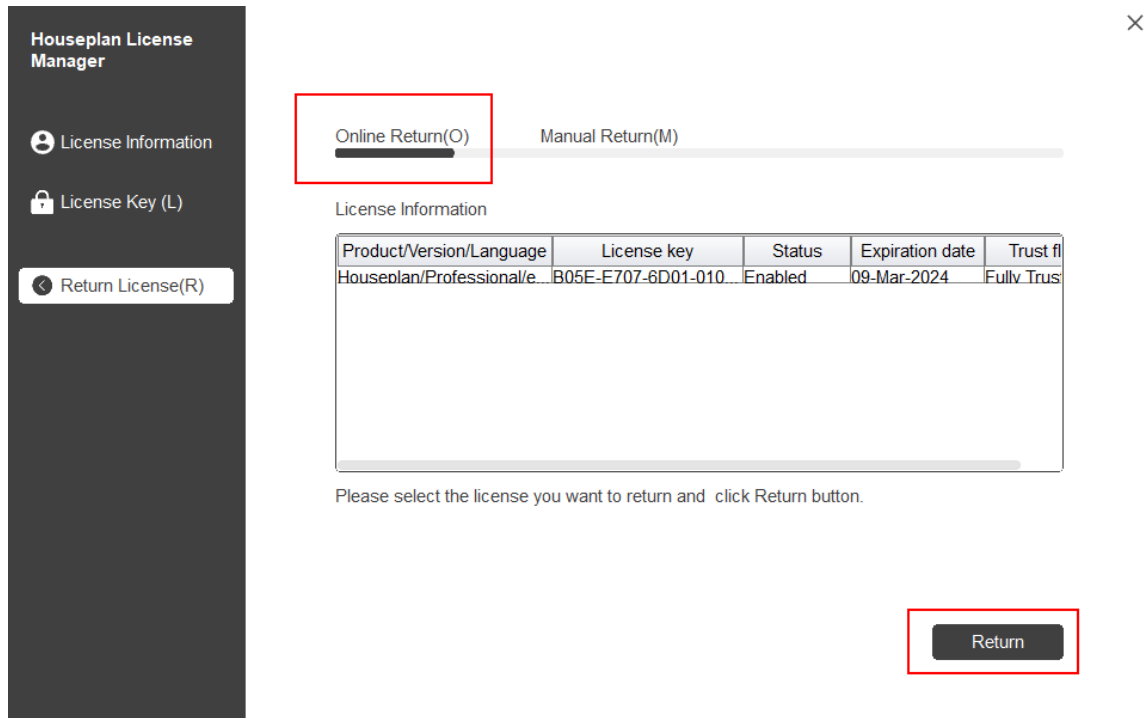
Then the following window open and click “Return License (R) ” button.



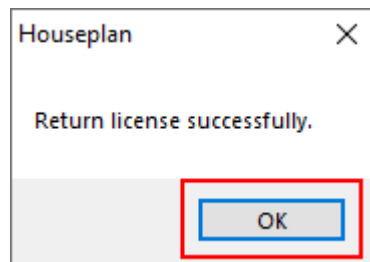
3.1. Online Return

Instruction: make sure your computer connect to the internet.

1. Click “Online Return (O)” and select the license which you want to return and click the “Return” button.



2. After a few seconds, the "Return license successfully" window opens. Click "OK" button to close the window. Then you can see the license you have selected to return has disappeared from License information.



3.2. Manual Return

If your computer is not connected to the internet, you can return the license key manually.

1. Click "Manual Return (M)" and select the license which you want to return.

Houseplan License Manager

- License Information
- License Key (L)
- Return License(R)**

Online Return(O) **Manual Return(M)**

License Information

Product/Version/Language	License key	Status	Expiration date	Trust file
Houseplan/Professional/e...	B05E-E707-6D01-010...	Enabled	09-Mar-2024	Fully Trust

1. **GENERATE** request file.
2. Upload the request file to <https://license.gstarcad.net/> and get return file (or send request file to your local distributor/reseller from whom you purchased Houseplan products to get return file)
3. **LOAD** return file and click Return button.

Return

2. Click "GENERATE" button to get the Request file.

Houseplan License Manager

- License Information
- License Key (L)
- Return License(R)**

Online Return(O) **Manual Return(M)**

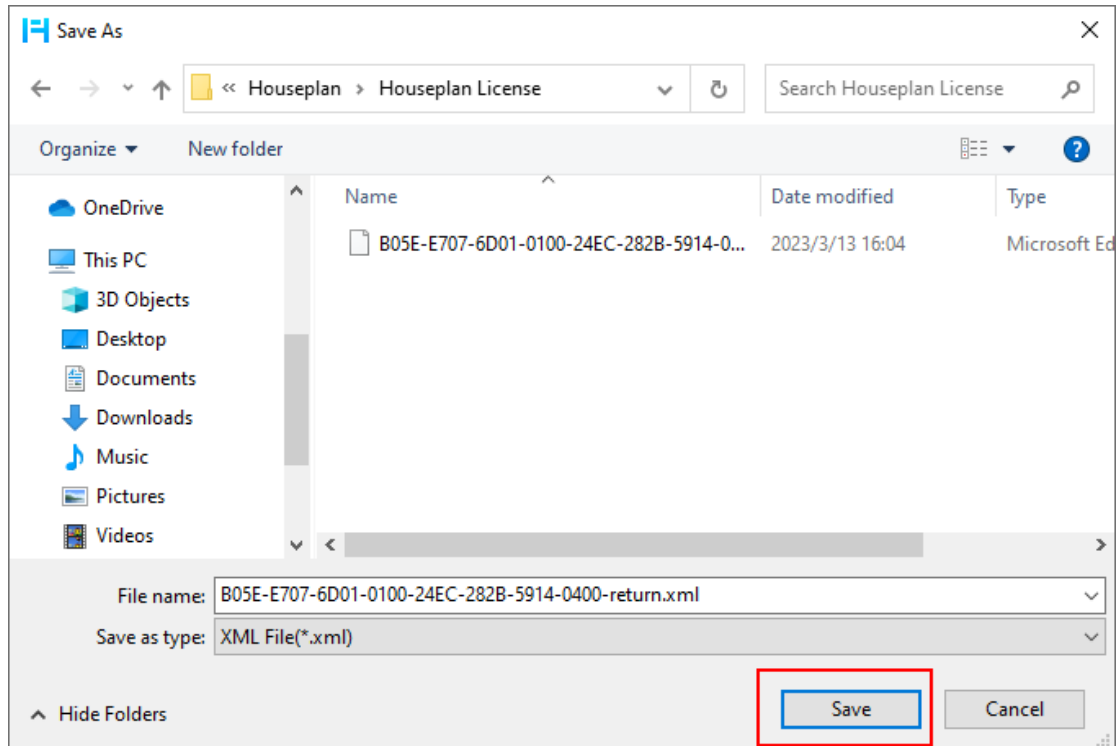
License Information

Product/Version/Language	License key	Status	Expiration date	Trust file
Houseplan/Professional/e...	B05E-E707-6D01-010...	Enabled	09-Mar-2024	Fully Trust

1. **GENERATE** request file.
2. Upload the request file to <https://license.gstarcad.net/> and get return file (or send request file to your local distributor/reseller from whom you purchased Houseplan products to get return file)
3. **LOAD** return file and click Return button.

Return

3. Save the Request file with the extension -return.



4. Click “OK” button after the Request file saved.

5. There are 2 ways to return the license.

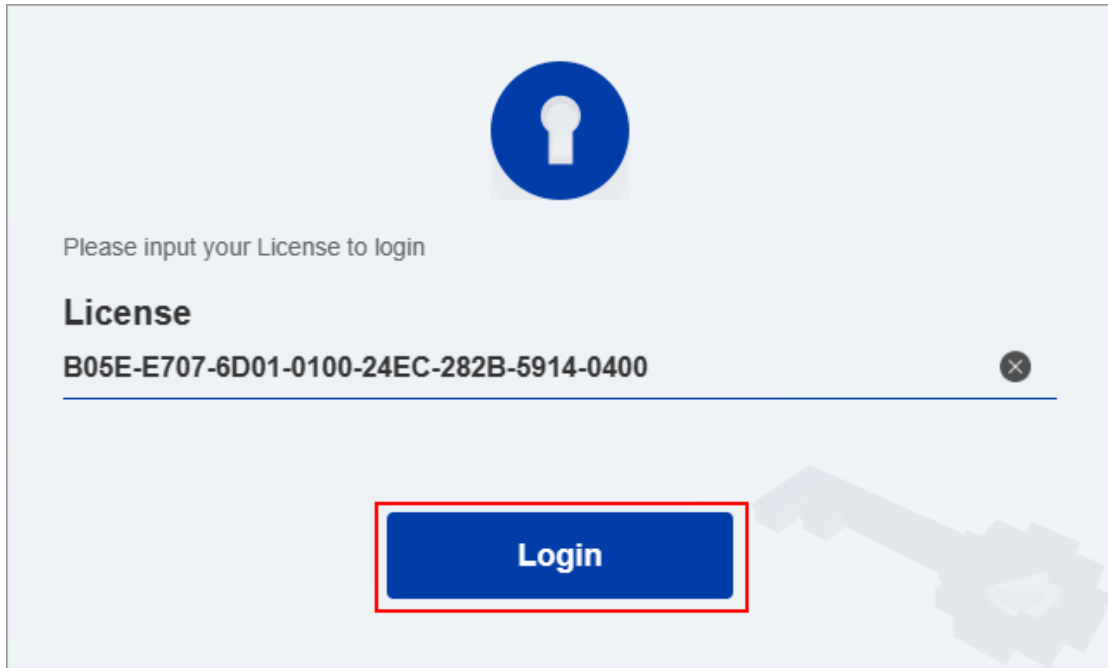
- **Option 1: E-mail**

You can send the return request file from any computer with internet connected to your local distributor/reseller from whom you purchased Houseplan 2.0 products to get the returnfile.

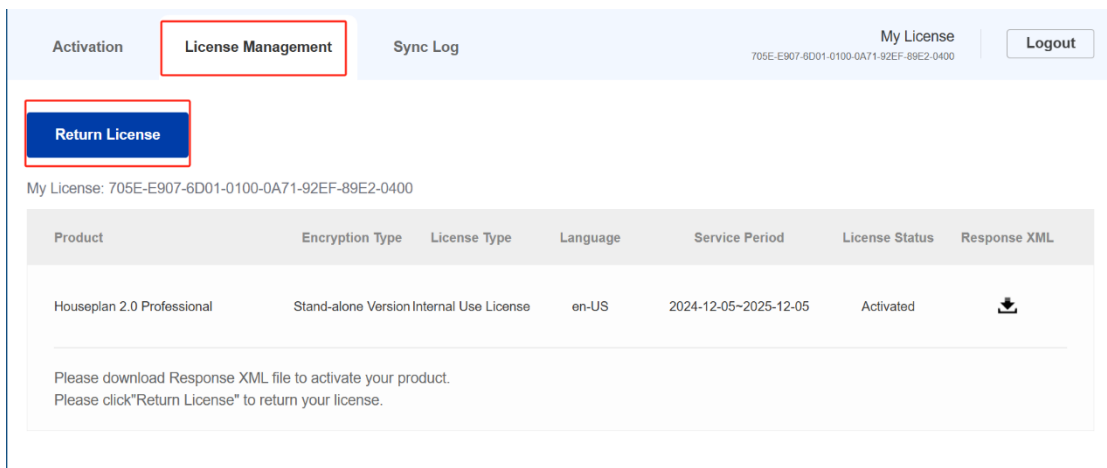
- **Option 2: Online Service**

You can access Houseplan 2.0 online service center from any computer with internet connected to download the license file.

6. Access the link <https://license.gstarcad.net/> and login with the Houseplan 2.0 license key.



7. Click License Management tab, and click "Return License" button.



8. Choose the request XML file you saved and Click "Submit" button to upload the request file.

My License: B05E-E707-6D01-0100-24EC-282B-5914-0400

Request XML File

Choose File

Upload File: B05E-E707-6D01-0100-24EC-282B-5914-0400-return.xml

Load the credible request XML returned file which created at user client

Submit

Find out the file and click it to submit

9. Download the Response XML from License Management tab.

Activation
License Management
Sync Log
My License
705E-E907-6D01-0100-0A71-92EF-89E2-0400
Logout

Return License

My License: 705E-E907-6D01-0100-0A71-92EF-89E2-0400

Product	Encryption Type	License Type	Language	Service Period	License Status	Response XML
Houseplan 2.0 Professional	Stand-alone Version	Internal Use License	en-US	2024-12-05~2025-12-05	Returned	<div style="border: 2px solid red; padding: 2px;">⬇</div>

Please download Response XML file to activate your product.
Please click "Return License" to return your license.

10. Go back to Houseplan 2.0 license Manager, Click "LOAD" button to load the -resp-return.xml file and click "Return" button to return Houseplan 2.0 authorization.

Houseplan License Manager

- License Information
- License Key (L)
- Return License(R)

Online Return(O) **Manual Return(M)**

License Information

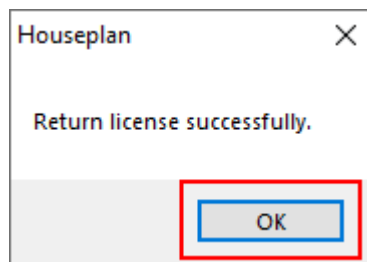
Product/Version/Language	License key	Status	Expiration date	Trust file
Houseplan/Professional/e...	B05E-E707-6D01-010...	Disabled	09-Mar-2024	Fully Trust

1. **GENERATE** request file.
2. Upload the request file to <https://license.gstarcad.net/> and get return file (or send request file to your local distributor/reseller from whom you purchased Houseplan products to get return file)
3. **LOAD** return file and click Return button.

E:\Houseplan\Houseplan License\B05E-E707-6D01-0100-24EC-282

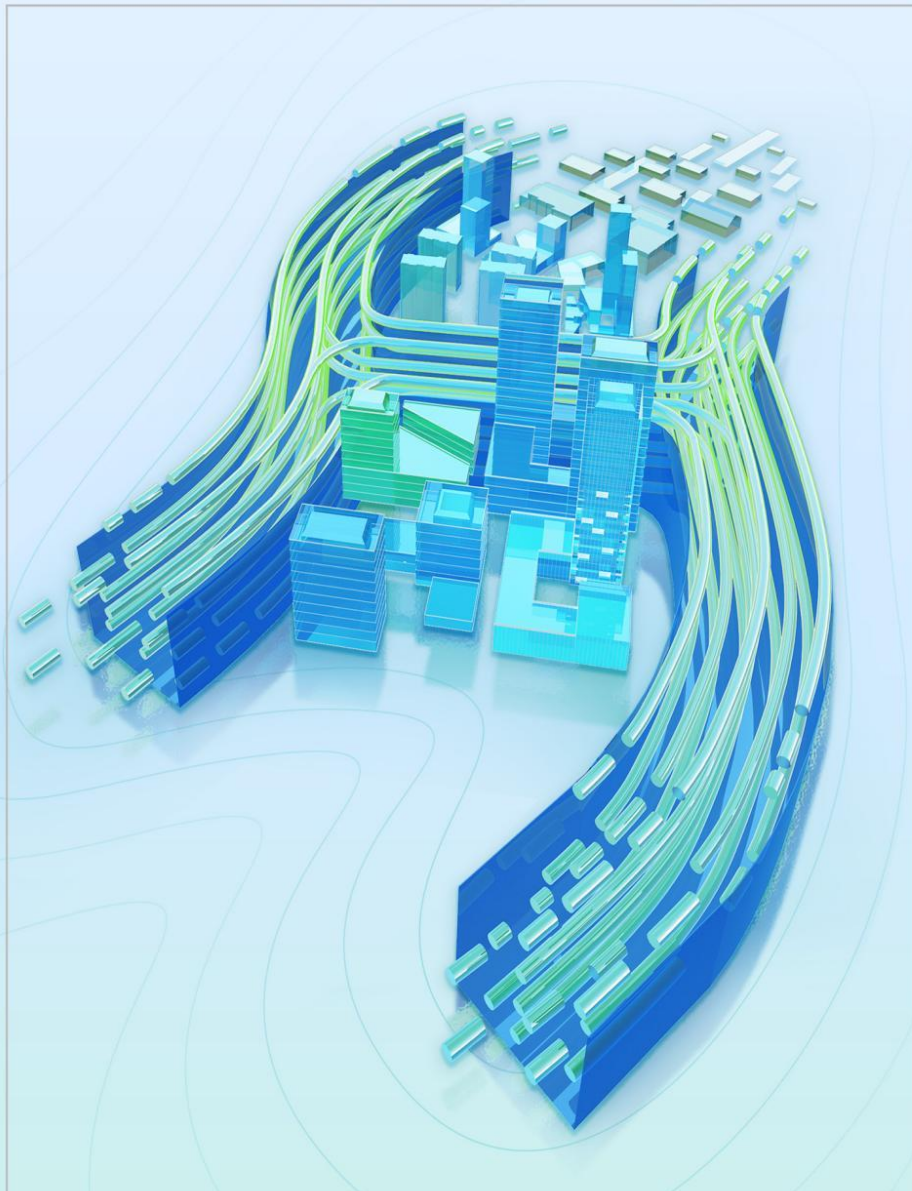
Return

11. Then you can see the license key disappeared in the License Information list.





Houseplan2.0



■ www.gstarcad.net/houseplan/