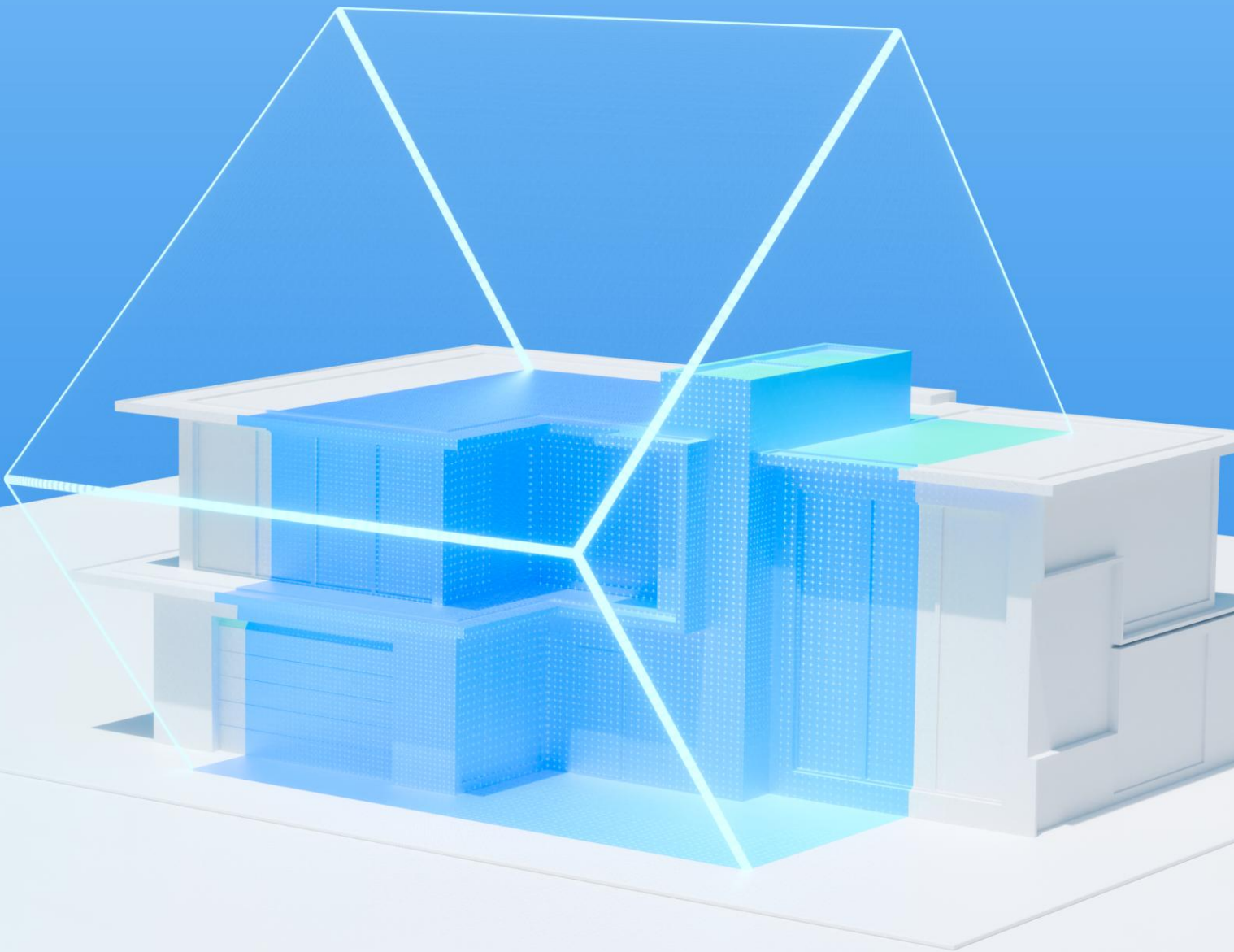




# ***Installation Guide***

*GstarCAD Point Cloud 2025*



# 1. GstarCAD Point Cloud 2025 System Requirements

**GstarCAD Point Cloud** is a powerful solution for Point Cloud to CAD conversion. Integrated with Undet Point Cloud plug-in, it allows you to seamlessly import and manage point cloud data directly in GstarCAD.

To run GstarCAD Point Cloud 2025, the Visual C++ Redistributable for Visual Studio 2015-2022 and .NET Framework 4.8 or above are necessary.

- **Operating System:**

Windows OS 64-bit (Windows 10 or Windows 11). **MAC is not supported (incl. Boot Camp).**

- **Supported GstarCAD versions:**

GstarCAD 2025 for Windows

- **Technical requirements:**

The Minimal technical requirements are the same as for GstarCAD, but since Undet is dealing with point clouds, which is often heavy and data-rich (millions of points having XYZ coordinates, Intensity and RGB values) some specs are worth upgrading.

**RAM:** The bigger the point cloud project, the more RAM will be needed. Most users working with small-scale point clouds will be fine with 8 GB of RAM. When dealing with tens of gigabytes of scan data, 16 GB of RAM will be welcome. Heavy-duty point cloud professionals utilizing hundreds of gigabytes in a single project will appreciate 32 GB of RAM or more.

**Hard Drive:** An SSD is far faster than an HDD. LAN will reduce performance considerably if your project is located on a server machine's drive. Thus, copy your project to the local drive for better performance.

**CPU:** Multiple threads are not supported. Therefore, you need to pay attention to single-thread performance.

**GPU:** While your CPU can render graphics, it'll do so at a much slower rate than a GPU. Thus, we recommend using graphical processors like NVIDIA or AMD with a 3D Graphics accelerator card with OpenGL version 4.4 or newer.

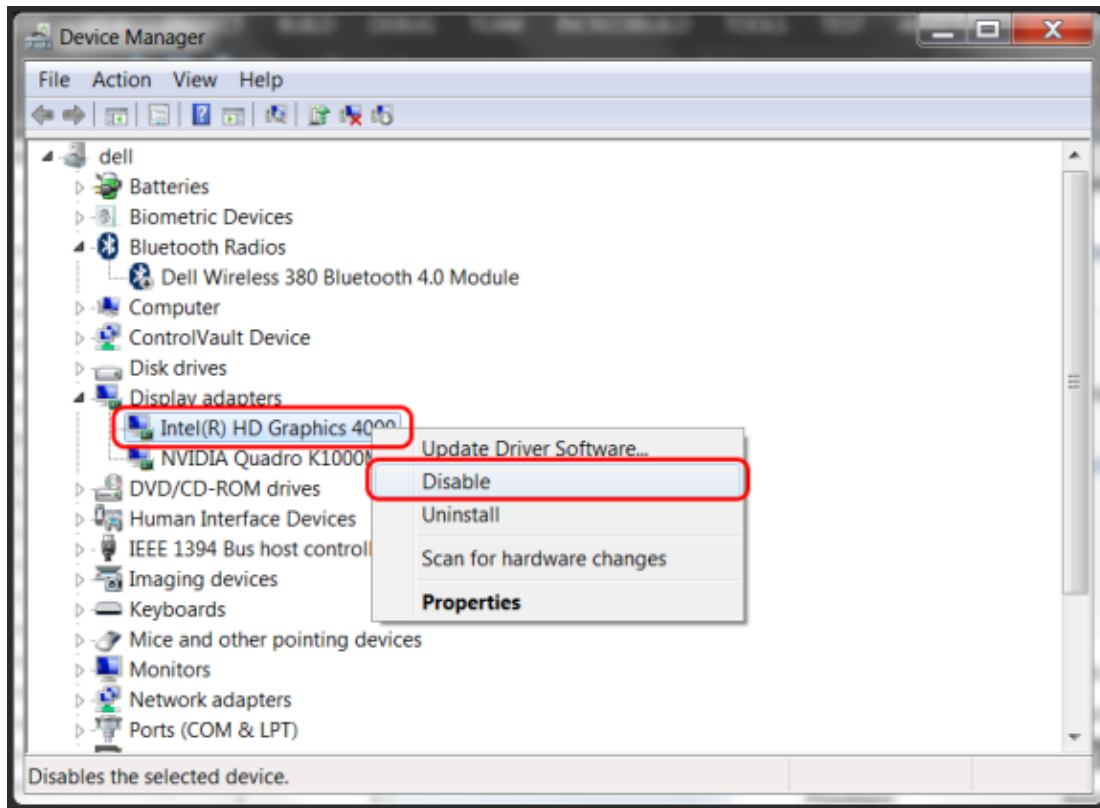
## **Multiple GPU's**

If you have two GPUs in your system you have to make sure that Undet uses the dedicated NVIDIA or AMD graphics card and not your onboard integrated GPU.

General Solution for Intel HD/AMD Integrated cards: You are working on a notebook machine; please follow these instructions to disable the Intel/AMD integrated graphics card via the Windows Device Manager:

**WARNING:** On some systems, the following steps may be harmful and can only be reverted via Windows Safe-Mode.

1. Pressing Windows + S will open the native Windows search function, perform a search for 'Device Manager'
2. Expand the Display adapters from the list displayed in the Device Manager.
3. If you see an 'Intel HD Graphics' or 'AMD mobile' card listed, right click on it and choose Disable from the menu.



Windows Device manager: Your system will now automatically use the second GPU in your system. However, if you are using a notebook, you probably want to follow the instructions above, because disabling your Intel HD/AMD mobile graphics card can increase your power consumption and therefore reduce your battery time.

## 2. Software installation

First, you need to create an Undet project with Undet Indexer (Undet project creator). If you don't have any point cloud data, below you will find several already created Undet demo projects. To open an Undet project with GstarCAD, please download the GstarCAD 2025 version. If you are a FARO SCENE webshare cloud user, we recommend trying the Undet Browser for new interactive features, including navigating using the point cloud Clipping Box.

1. Download Indexer (project creator): [Undet Indexer.exe](#)
2. Download Undet Browser: [Undet Browser.exe](#)

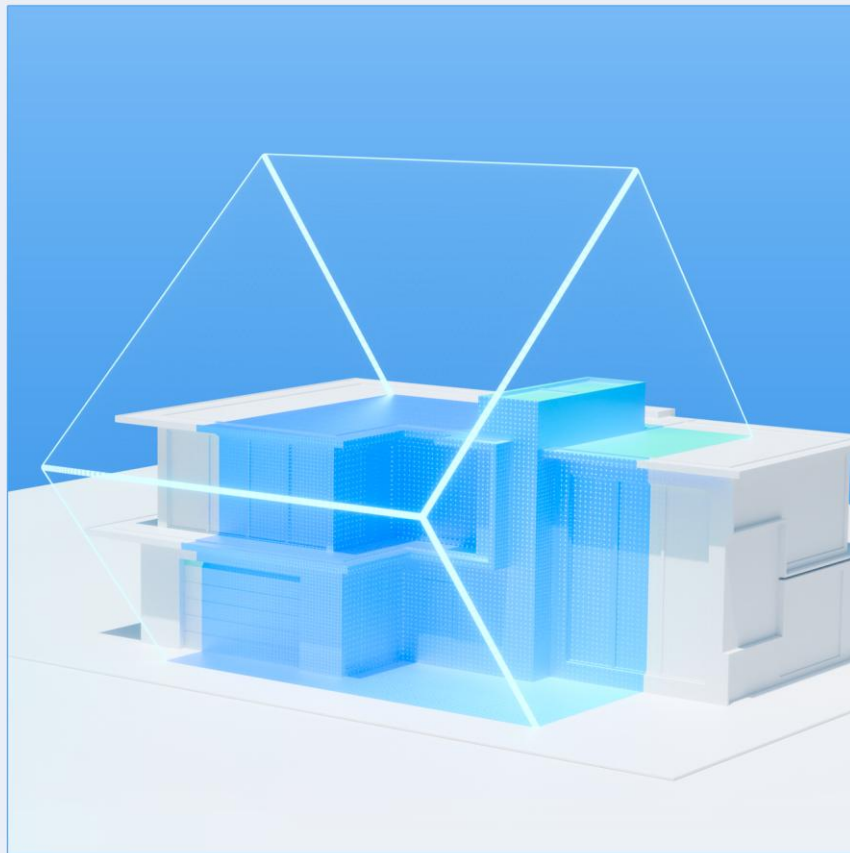
Undet demo project (point cloud) sample download link:

1. [Small Chapel DEMO 463 Mb](#)
2. [Wooden Church \(Internal & external\) DEMO 1.2 GB](#)
3. [UAV City Area DEMO 385 Mb](#)
4. [Simply Building including 1st floor DEMO 1.3 GB](#)
5. [Railway Bridge DEMO 660 Mb](#)

**Notes:** Some antivirus software may disturb the installation process. If installation was blocked by your antivirus software, we recommend that you temporarily disable your antivirus software during the GstarCAD Point Cloud installation process. Undet requires the latest Microsoft Framework, which is a heavy update that might take some time to install. But if your PC is up to date it should take just a couple minutes



**GstarCAD**  
Point Cloud 2025



■ <https://www.gstarcad.net/>