



# ***Activation and License Return Guide***

---

***GstarCAD for Mac***



## Table of Contents

1.	GstarCAD Licensing Options.....	1
2.	License Key Activation and Return.....	1
2.1.	Standalone License Key.....	1
2.1.1.	Online Activation.....	2
2.1.2.	Online Return.....	3
2.2.	Network License Key .....	4
2.2.1.	Configuration Settings.....	4
2.2.2.	Online Activation (Server Side).....	6
2.2.3.	Network License Manager Tool Notes (Server side).....	7
2.2.4.	Manual Activation (Server Side).....	7
2.2.5.	Online Return (Server side).....	8
2.2.6.	Manual Return (Server Side).....	9
2.2.7.	GstarCAD Network License Activation (Client Side).....	10
3.	Frequently Asked Questions.....	11

# 1. GstarCAD Licensing Options

GstarCAD for Mac offers Stand-alone and Network license key activation Method.

## Stand-alone license

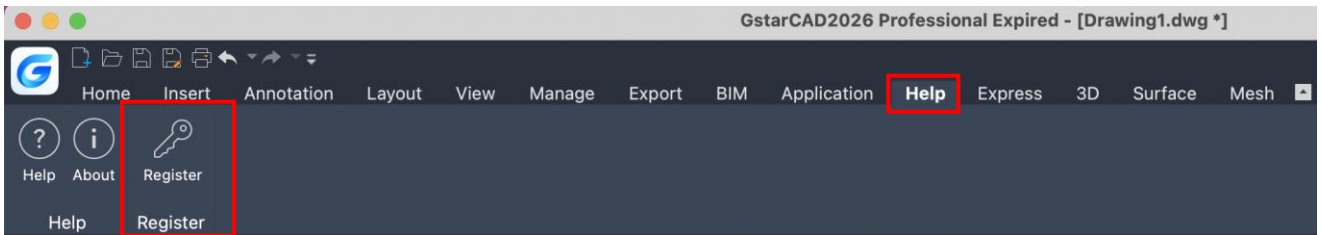
The software is constrained to a certain host. A license is needed for each computer on which the software will be installed.

## Network license

A pool of licenses is available on the server, for use in any computer on the network. You only need to have licenses for the maximum number of simultaneous users expected, not for each computer where the software will be installed.

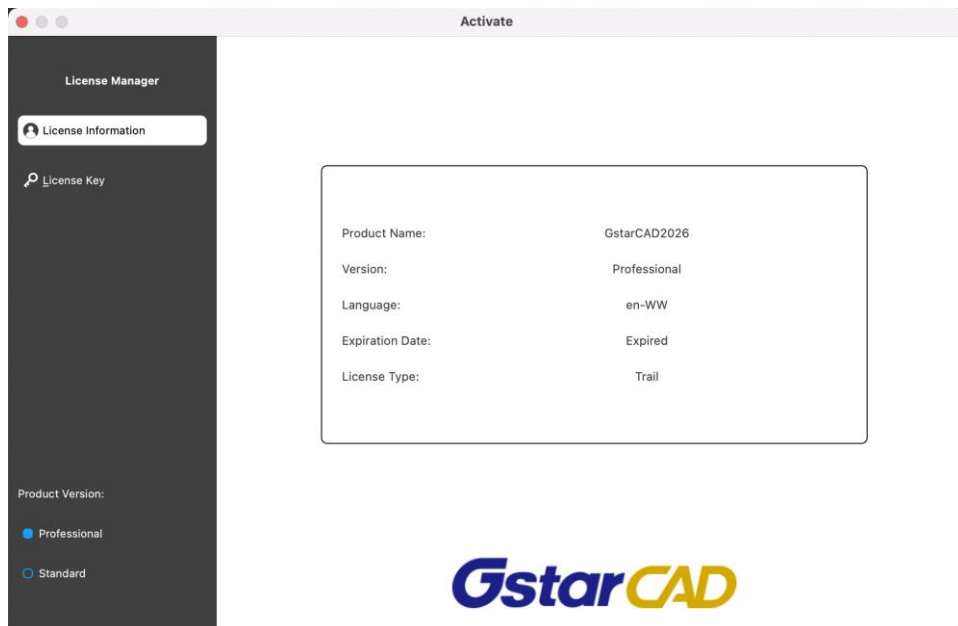
# 2. License Key Activation and Return

GstarCAD for Mac offers a 30-day trial period for the first installation. During the trial period, the product performs as fully activated. You can check the trial expiration time in the title bar of the software or from the [Help](#) → [Register](#) → [License Manager](#) → [License Information](#) page. After the expiration, the software functions are limited. If you want to use the full functions, you need to purchase a valid license.



## 2.1. Standalone License Key

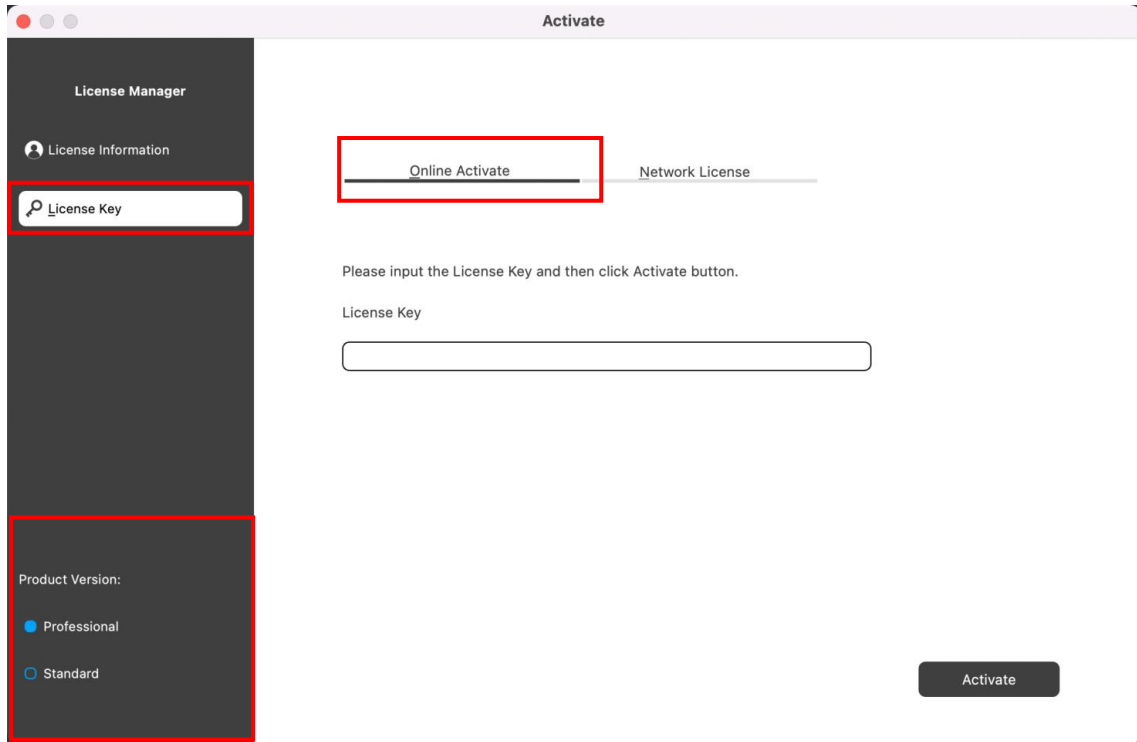
You need a valid **standalone** license key to activate your GstarCAD for Mac. GstarCAD for Mac supports online activation using a stand-alone license code. You can click the menu bar [Help](#) → [Register](#) to open the GstarCAD license Manager.



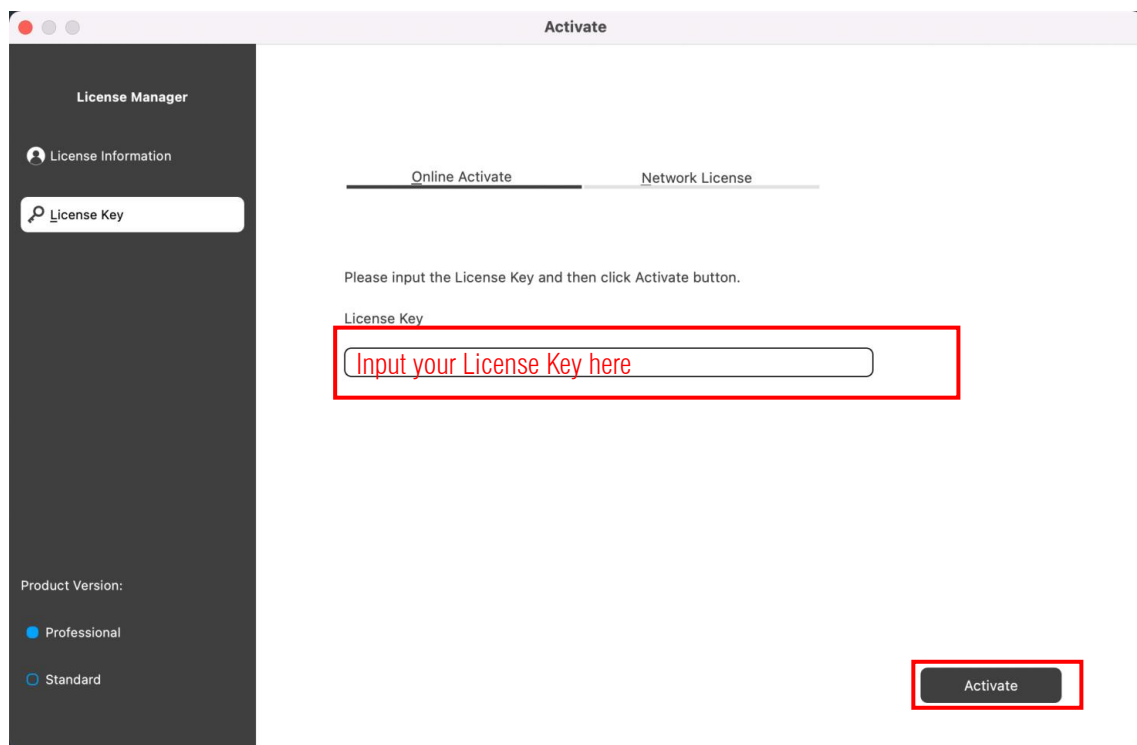
### 2.1.1. Online Activation

**Instruction:** Make sure your computer is connected to the internet.

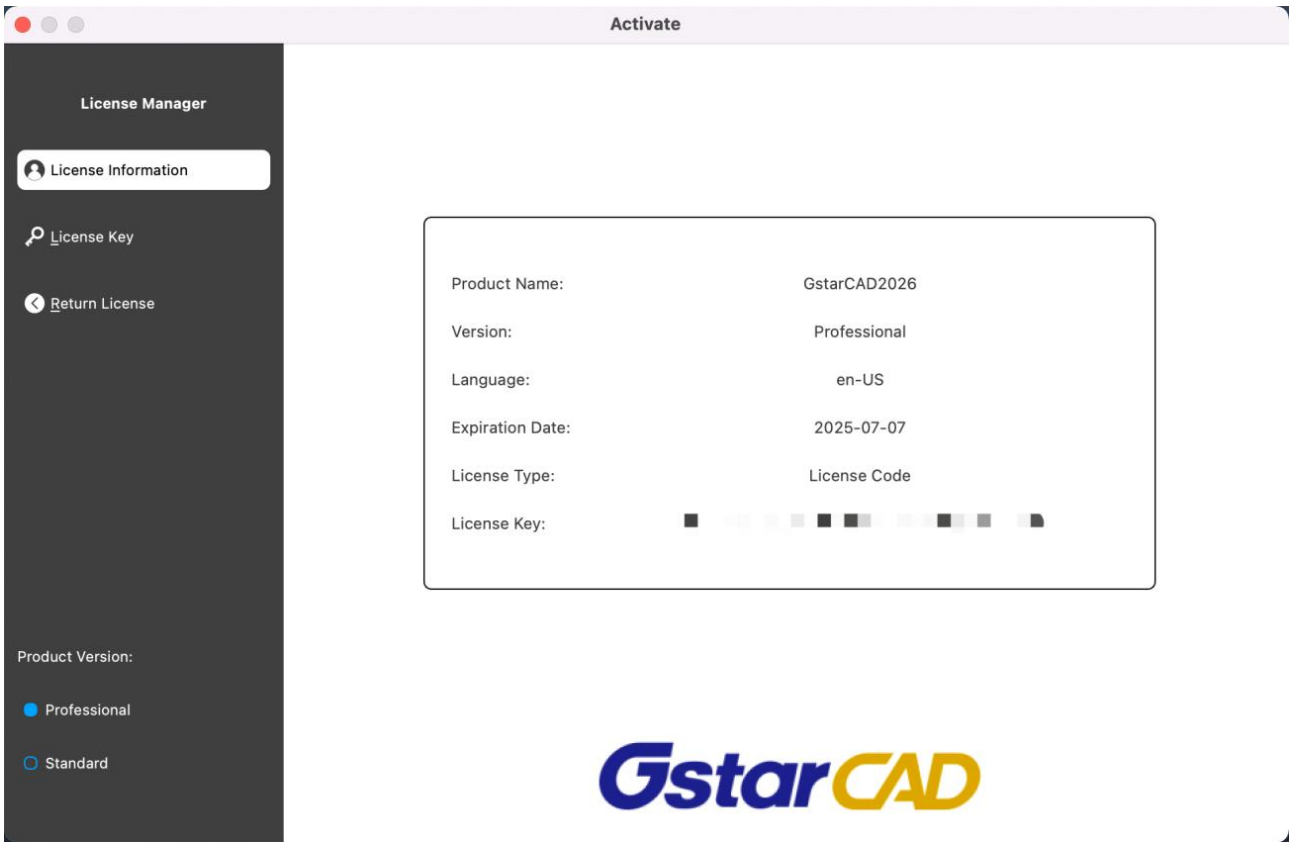
1. Click [License Key](#) → [Online Activation](#) and select a version of GstarCAD for Mac (Professional and Standard).



2. Input your [License Key](#) and click the [Activate](#) button.

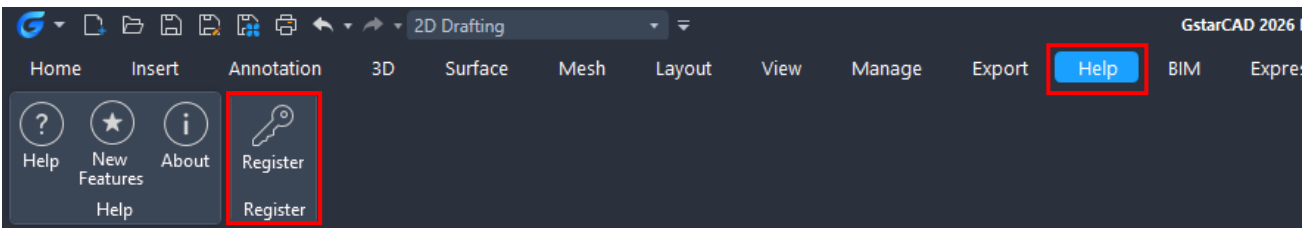


- After a few seconds, it will prompt "The software is activated. Please restart." Then restart your GstarCAD for Mac.
- After successful activation, you can view the current license information from License Manager.



### 2.1.2. Online Return

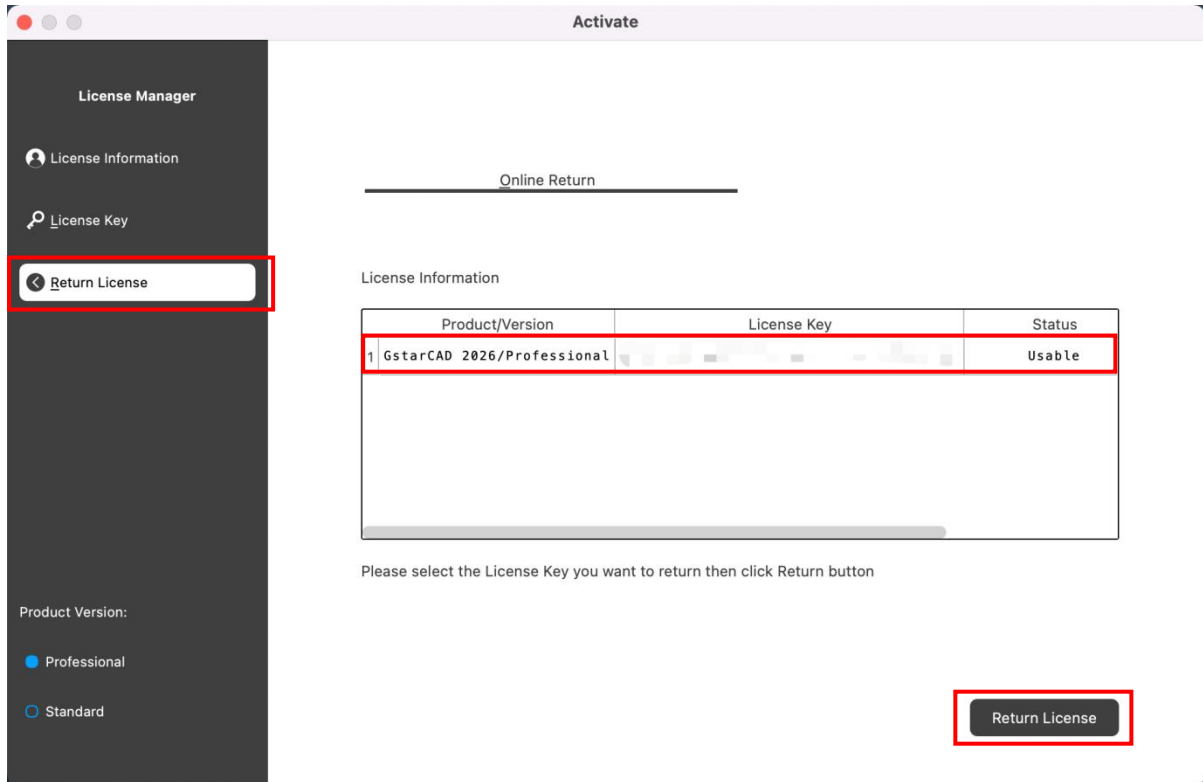
Before switching computers, upgrading your system, or replacing the hard drive/motherboard, you have to return the license first to ensure software can be activated successfully.



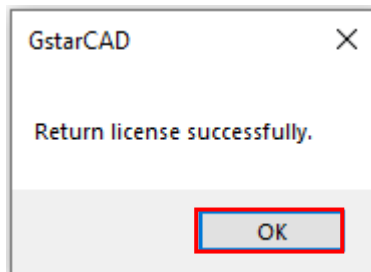
Run GstarCAD License Manager which you can access from [Help](#) → [Register](#) tab in GstarCAD for Mac. Then the License Manager window opens.

**Instruction:** Make sure your computer is connected to the internet.

- Click [Return License](#) → [Online Return](#) and select the license to be returned and click the [Return License](#) button.



- After a few seconds, it will prompt "Return license code successfully". Click **OK** button to close the window. Then you can see the license you have selected to return has disappeared from License information.



## 2.2. Network License Key

GstarCAD Network enables you to share a number of GstarCAD licenses on your LAN. It gives flexibility of license floating among a working group. Before the network activation, you need to specify server computer to install [Gstarsoft Network License Manager](#) where you can download from our website or contact distributor for that to manage your network license.

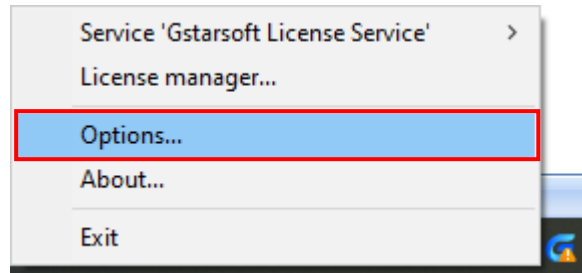
Currently, [Gstarsoft Network License Manager Tool](#) only can be installed in Windows system.

For the detail, please refer to "[Gstarsoft Network License Manager Guide](#)"

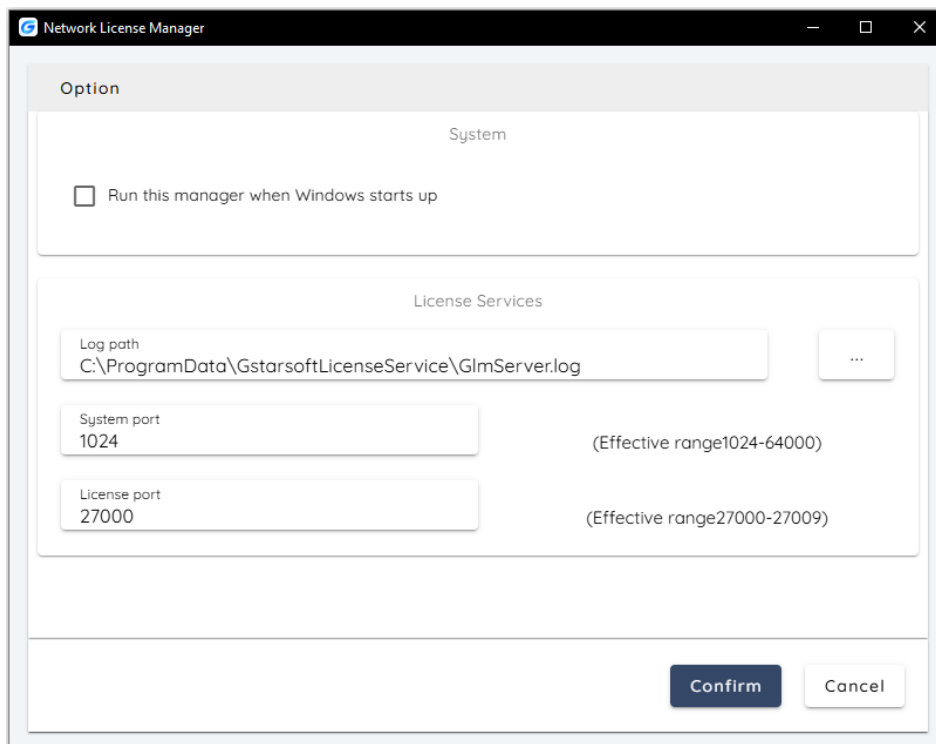
### 2.2.1. Configuration Settings

After the Gstarsoft Network License Manager is installed, click the [Gstarsoft Network License Manager](#) icon and click [Options](#) to

set the configurations.



Set the configurations as below:



- System:

**Run this manager when Windows startup:** When this option is checked, the Gstarsoft Network License Manager can be run automatically when Windows starts.

Remark: "Run this manager when Windows startup" option will not affect the license status.

- License service:

**Log Path:** You can specify a path to save the license logs and the path should allow LocalService to write in, otherwise the license service will fail to run. If your operation system is Windows 10, the default path ProgramData is recommended.

**System port:** The valid range should among 1024-64000.

**License Port:** The valid range should among 27000-27009.

After the configurations have been confirmed, the exclamation mark will change to check mark.



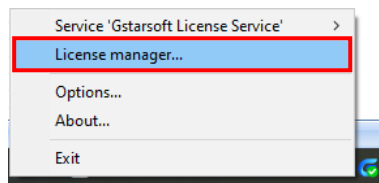
## 2.2.2. Online Activation (Server Side)

If you have a GstarCAD 2026 Network License Key, you can run Gstarsoft Network License Manager on server computer. This tool provides functions such as real-time monitoring, multi-dimensional data analysis, refined permission control, and intelligent diagnosis, enabling visual management of CAD licenses and resource optimization configuration and so on.

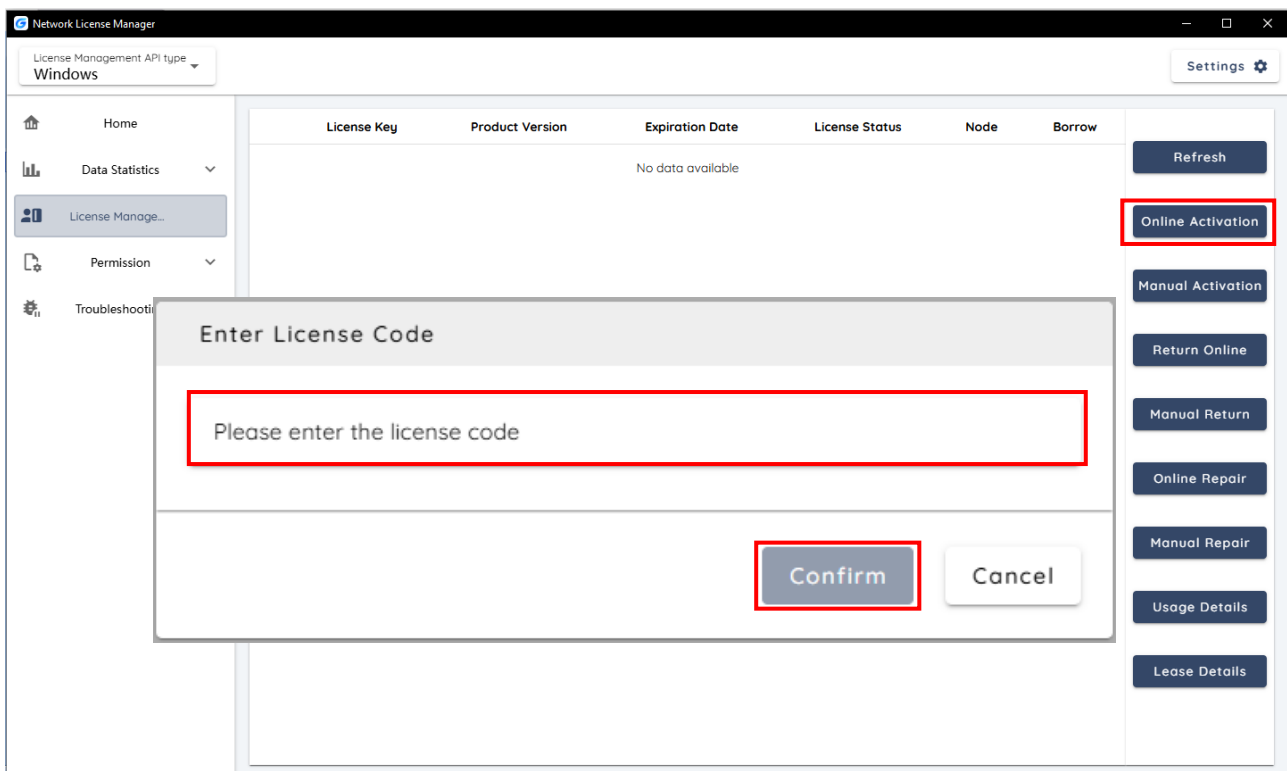
**Instruction:** Make sure your computer is connected to the internet.

Please follow the steps below to activate your GstarCAD Network license online from server.

1. Click [Gstarsoft Network License Manager](#) icon and select [License Manager](#) option.



2. Click [License Management](#) → [Online Activation](#), enter the license code, and then click the [Confirm](#) button to activate.
3. After successful activation, the license management list will display the license code information, including product version, expiration date, License Status, Node, borrow, etc.





### 2.2.3. Network License Manager Tool Notes (Server side)

1. Some Security softwares may cause the failure of creating services from server. You can try to exit the security software or add this tool to the trusted path. Please check the following steps to add it to the trusted path:

➤ Open **Internet Explorer (IE)** and select **Internet Options** and then click **Trusted sites** from **Security** tab.

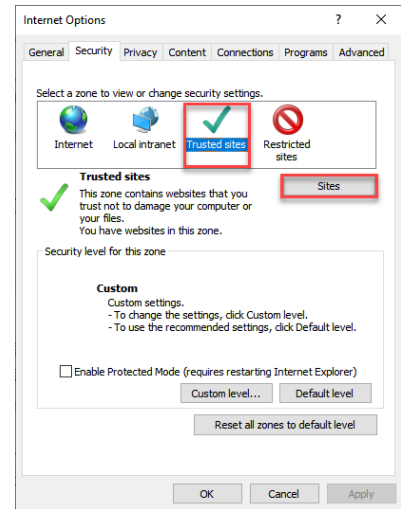
➤ Add the following two sites to the trusted sites.

<https://support.gstarcad.net>

<https://support2.gstarcad.net>

➤ Click **OK** button to save the security settings. Then you can activate or return GstarCAD network license online normally.

2. For Windows Server operation system, if it prompts "Session does not exist" when activate GstarCAD Network license online via Gstarsoft Network License Manager. Please add this tool to the trusted path.
3. Please use English name for the server machine.
4. Before installing the new version of Gstarsoft Network License Manager, ensure the legacy service is stopped and the old version is uninstalled to avoid conflicts. Once the new version of this tool is running, it supports both the latest products and backward compatibility with legacy versions.

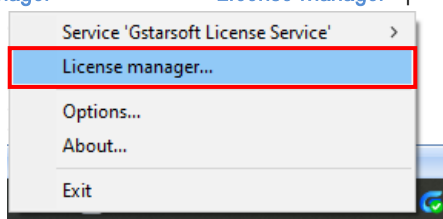


### 2.2.4. Manual Activation (Server Side)

**Instruction:** If your computer is not connected to the internet, you can use activation file (xml file) to activate your GstarCAD for Mac Network license manually.

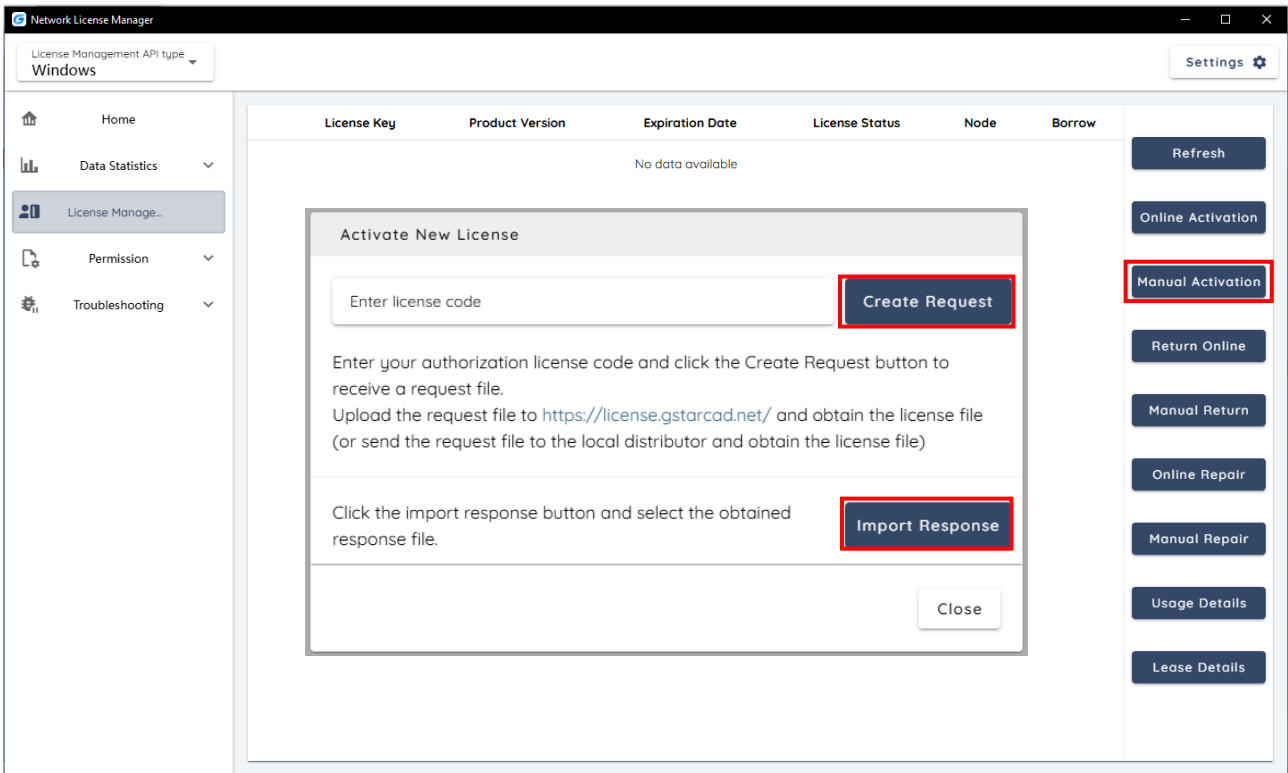
Please follow the steps below to activate your GstarCAD for Mac manually:

1. Click **Gstarsoft Network License Manager** icon and select **License Manager** option.



2. Enter the license code and click the **Create Request** button to generate an \*.xml request file.
3. Send this request file to your local dealer or upload it to the GstarCAD online service center (<https://license.gstarcad.net/>) to obtain the corresponding \*.xml response file.
4. Click the **Import Response** button and select the obtained response file.
5. Click the **Close** button to close the pop-up window to complete the activation.
6. After successful activation, the license management list will display the License Key information, including Product version,

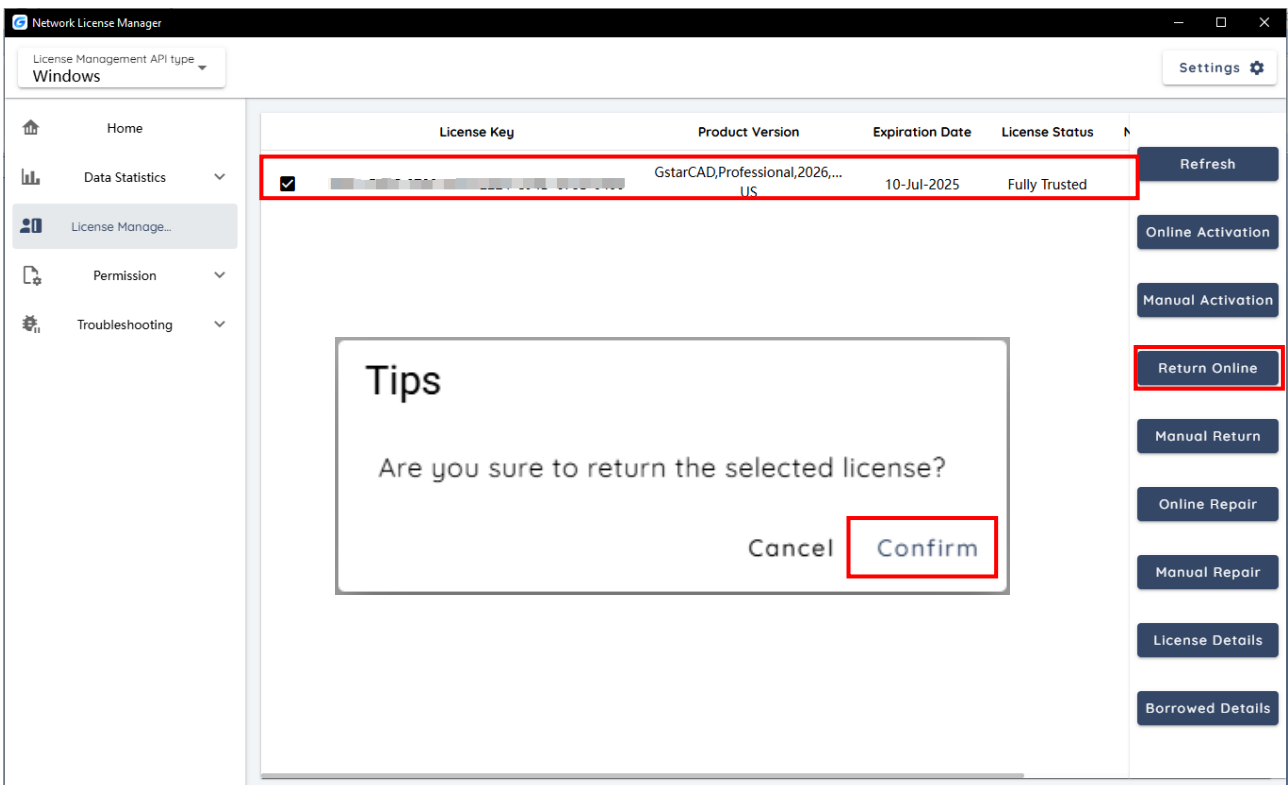
Expiration date, License status, Node and Borrow, etc.



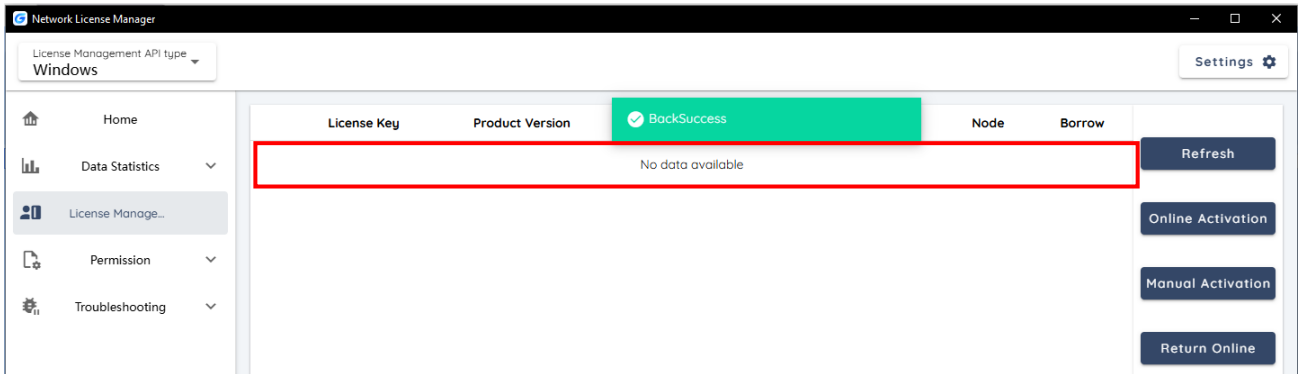
### 2.2.5. Online Return (Server side)

**Instruction:** Make sure your computer is connected to the internet.

1. Select the license which you want to return and click the **Return Online** button.
2. Click **Confirm** button to return the selected license.



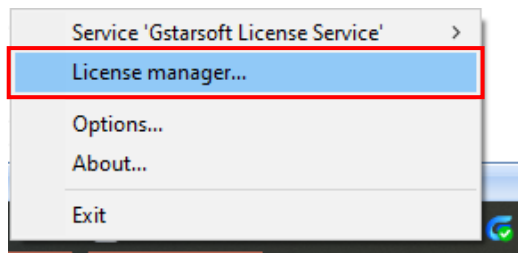
3. After a few seconds, you can see the license you have selected to return has disappeared from License information.



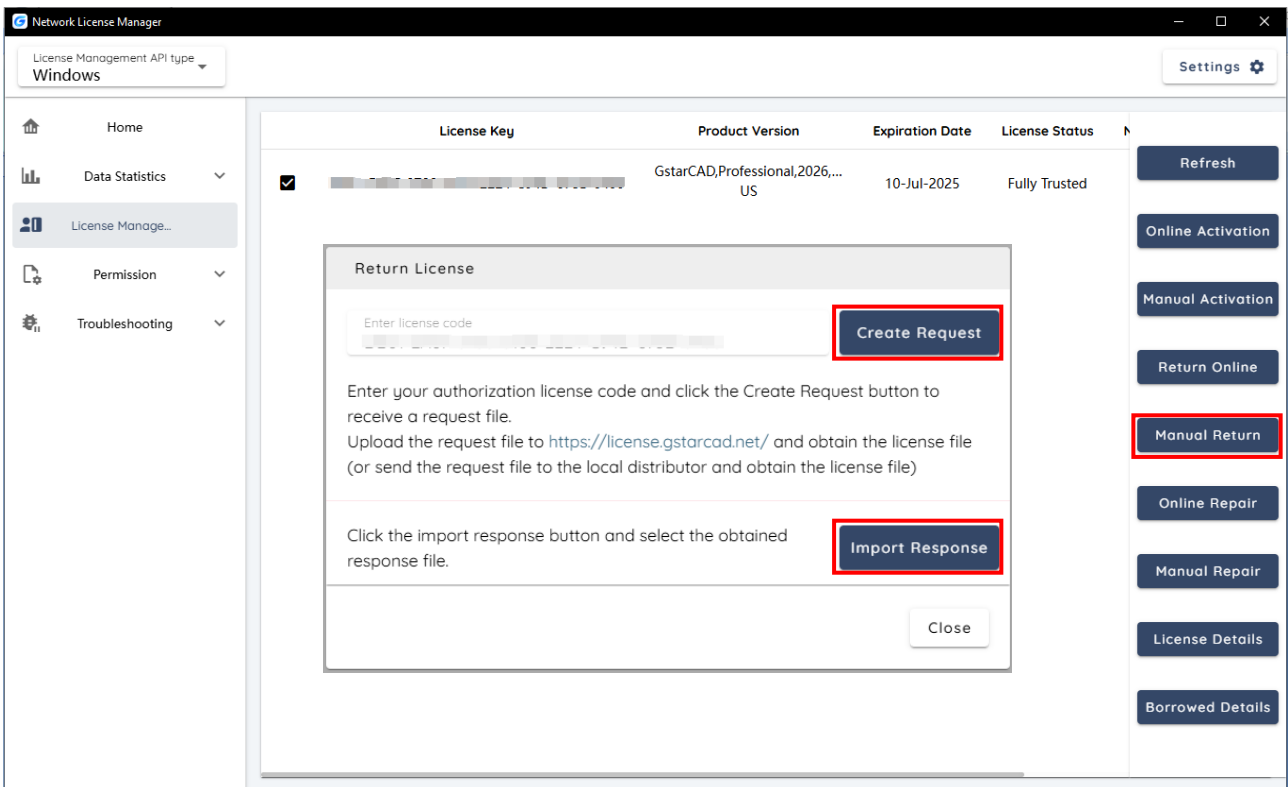
### 2.2.6. Manual Return (Server Side)

**Instruction:** If your computer is not connected to the internet, you can return your GstarCAD for Mac network license manually.

1. Click **Gstarsoft Network License Manager** icon and select License Manager option.



2. Select the license which you want to return and click **Manual Return**.



3. Enter the license code and click the **Create Request** button to generate an \*.xml request file.
4. Send this request file to your local dealer or upload it to the GstarCAD online service center (<https://license.gstarcad.net/>) to obtain the corresponding \*.xml response file.
5. Click the **Import Response** button and select the obtained response file.
6. Click the **Close** button to close the pop-up window to complete the activation.
7. After a few seconds, you can see the license you have selected to return has disappeared from License information.

### 2.2.7. GstarCAD Network License Activation (Client Side)

After GstarCAD network license key has been activated on the server computer, any client with the valid server IP and License Port can access to the server in the same LAN.

Please follow the steps below to activate your GstarCAD Network on client side:

1. Click the menu bar **Help** → **Register** → **License key** → **Network License** to open the network license activation page.
2. Select software version (Professional or Standard).
3. Enter the **Server IP** address and **Port**, and then click the **Activate** button to activate your software on client side.

The screenshot shows a window titled "Activate" with a dark sidebar on the left. The sidebar contains "License Manager" and "License Information" sections. Under "License Information", there is a search bar labeled "License Key". At the bottom of the sidebar, "Product Version:" is shown with two radio buttons: "Professional" (selected) and "Standard". The main content area has two tabs: "Online Activate" and "Network License", with "Network License" being the active tab. Below the tabs, there is a text prompt: "Please enter the license server name or IP address and then click Activate button." There are two input fields: "Server/IP" and "Port(27000-27009)". Both input fields are highlighted with a red border. At the bottom right of the main content area, there is an "Activate" button, also highlighted with a red border.

### 3. Frequently Asked Questions

**Q1: Can the license code of GstarCAD for Mac version be used to activate GstarCAD 2026 for Windows version or Linux version software?**

A1: GstarCAD 2026 licenses are cross-platform compatible between Windows and Mac. The license code of GstarCAD for Mac is the same as that of GstarCAD Windows. For example, a license for Mac can activate GstarCAD 2026 for Windows, and vice versa. However, this compatibility does not extend to Linux.

Please note that a license code can only be used on one device at a time. If you want to change the device, you need to return the license code from the previous device first.

**Q2: Can the Gstarsoft Network License Manager Tool be deployed on any system including Windows, Mac, or Linux?**

A2: Currently, the Network License Manager Tool can only be deployed on Windows computers.

**Q3: Can the Network license client be any system of Windows/Mac/Linux?**

A3: The client can be a Windows or Mac computer in the same LAN.

**Q4: How to reclaim nodes whose network licenses have been used?**

A4: After the client connects to the server and activates GstarCAD for Mac, it will occupy a node as long as the software keeps running. When the client software is closed, the node will be automatically released.



***GstarCAD for Mac***

<https://www.gstarcad.net>

***Gstarsoft***