



# **Activation and License Return Guide**

---

**GstarBIM 2027**



## Content

1. GstarBIM Licensing Options .....	1
2. License Key Activation .....	1
2.1. Standalone License Key .....	2
2.1.1. Online Activation .....	2
2.1.2. Manual Activation .....	4
2.2. Network License Key .....	8
3. USB Dongle Activation .....	9
3.1. Standalone USB Dongle .....	9
3.2. Network USB Dongle .....	10
4. Standalone License Key Return .....	11
4.1. Online Return .....	12
4.2. Manual Return .....	13
5. Network Licenses Borrow and Return .....	17
5.1. Borrow License from Server .....	18
5.2. Borrowed Return .....	19

# GstarBIM 2027 Activation and License Return Guide

## 1. GstarBIM Licensing Options

GstarBIM provides the flexible licensing options. GstarBIM offers Stand-alone and Network license, both are available with License key and USB Dongle.

### Stand-alone license

The software is constrained to a certain host. A license is needed for each computer on which the software will be installed.

### Network license

A pool of licenses is available on the server, for use in any computer on the network. You only need to have licenses for the maximum number of simultaneous users expected, not for each computer where the software will be installed.

	Stand-alone		Network	
	License-key Serial number	USB-key Dongle	License-key Serial number	USB-key Dongle
Perpetual license	✓	✓	✓	✓
Rental license	✓	×	✓	×
License borrowing	×	×	✓	×
Connection to license server	×	×	✓	✓

## 2. License Key Activation

After you install GstarBIM 2027 and start up software, the system prompts you to choose **Activate** or **Trial**.

In both cases, please select a version accordingly first.



Trial will expire in **30** day(s)

Activate

Trial

- If you want to try GstarBIM 2027, just select **Trial** to get a 30-day trial of the software. During the trial period, the product performs as fully activated.
- If you already have a valid license key, you can activate the software directly by selecting **Activate** to open GstarBIM License Manager. Or you can access GstarBIM License Manager from Help menu- Register.

The license key has two encryption methods: stand-alone and network activation.

Stand-alone license key activation methods: online activation and manual activation.

Network license key also supports online activation and manual activation. In addition, the network version can also be activated by borrowing a license from server.

There are four methods provides in License key tab.

**Online Activation:** Activate license online

**Manual Activation:** Activate license manually

**Network License:** Get license from a network license server

**Borrow License:** Borrow license from a network license server

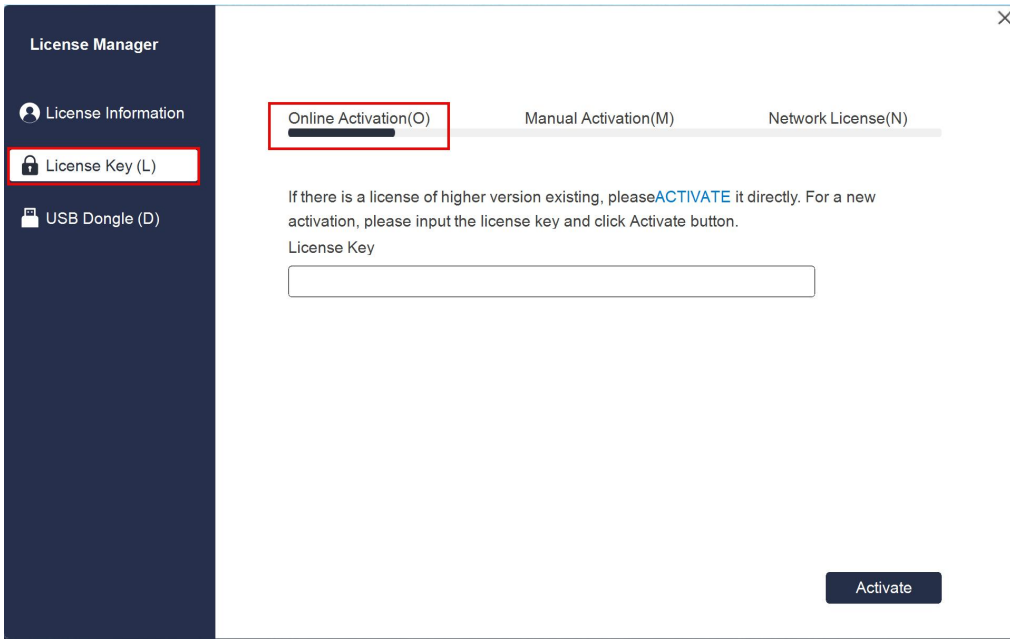
## 2.1. Standalone License Key

You need a valid **standalone** license key to activate your GstarBIM.

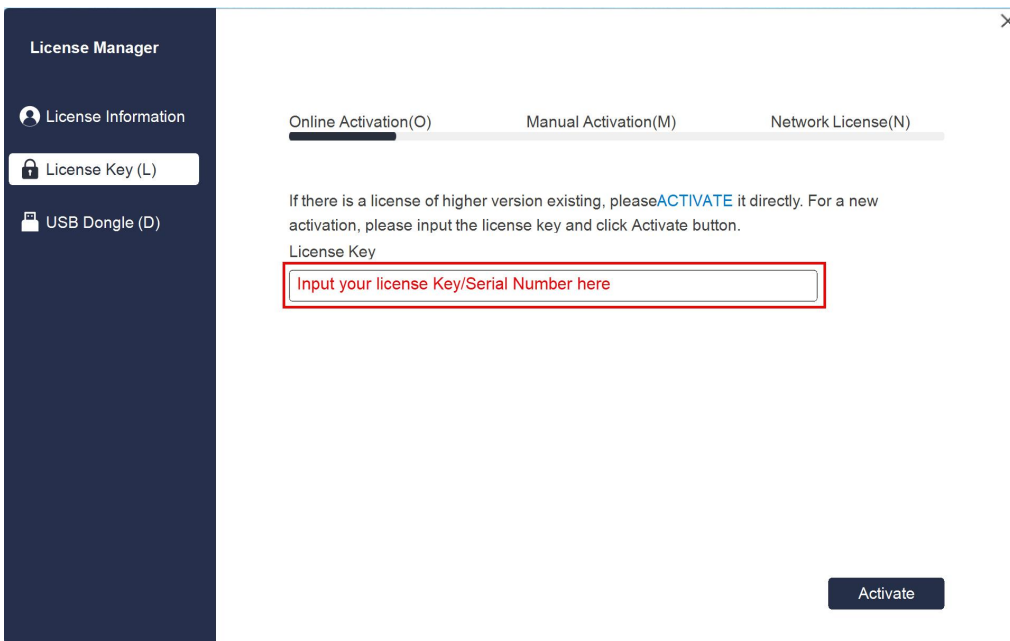
### 2.1.1. Online Activation

**Instruction:** Make sure your computer is connected to the internet.

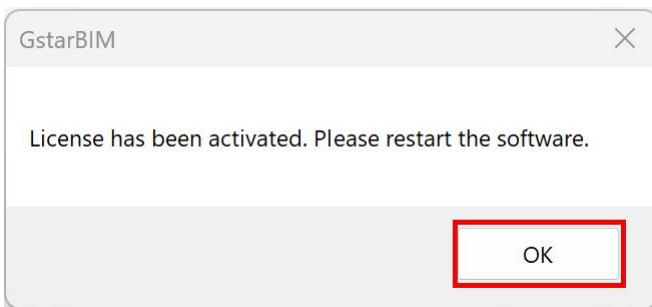
1. Click **License Key(L)** → **Online Activation (O)**



2. Input your **License Key** (serial number) and click the **Activate** button.

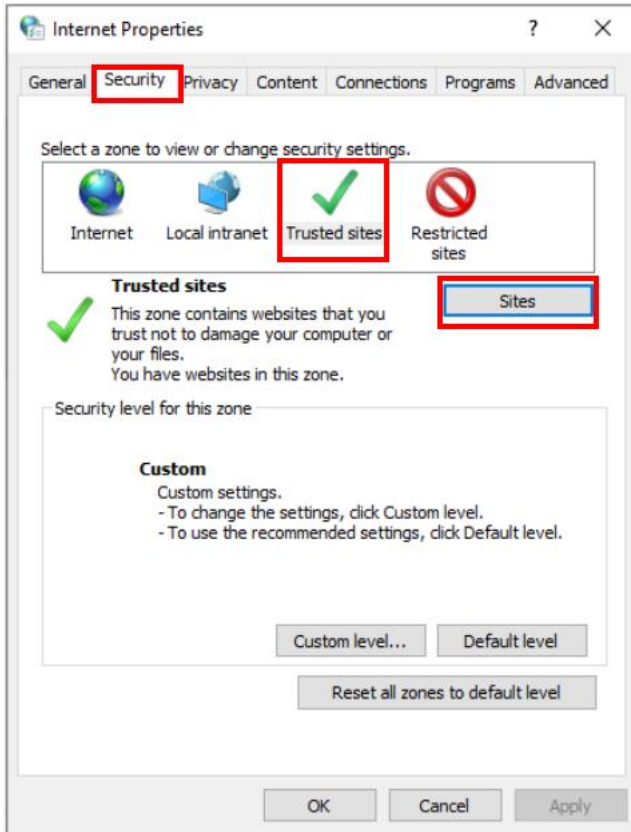


3. After a few seconds the following message appears. Click **OK** button to finish the activation. Then restart your GstarBIM 2027.



**Note:** For Windows Server operation system, if it prompts "Session does not exist" when activate or return GstarBIM standalone license online via GstarBIM License Manager, please check the following solution:

1. Open **Internet Explorer (IE)** and select **Internet Options** and then click **Trusted sites** from **Security** tab.

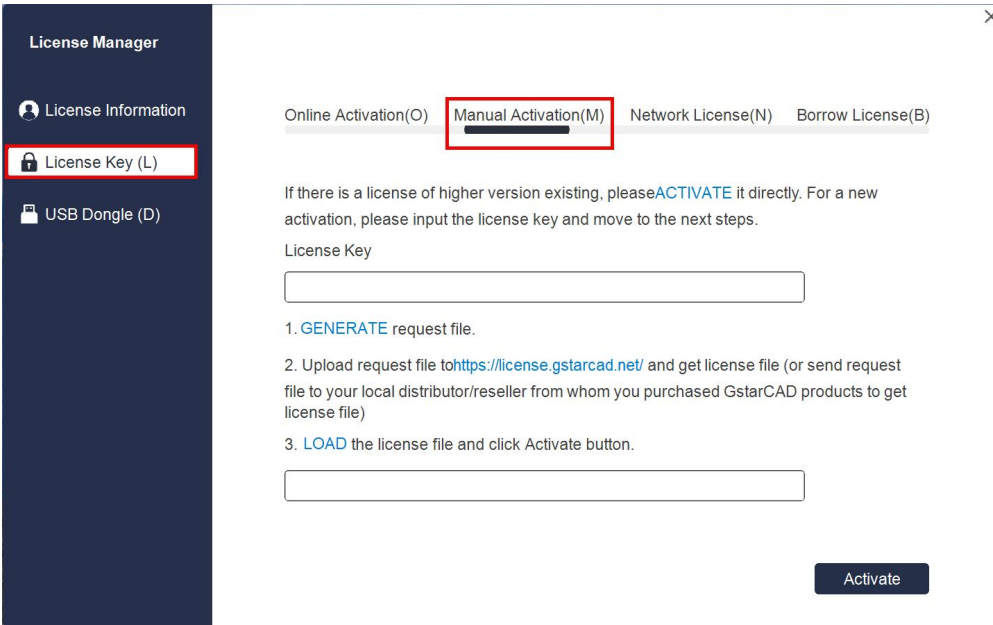


2. Add the following two sites to the trusted sites.  
<https://support.gstarcad.net>  
<https://support2.gstarcad.net>
3. Click **OK** button to save the security settings. Then you can activate or return GstarBIM standalone license online normally.

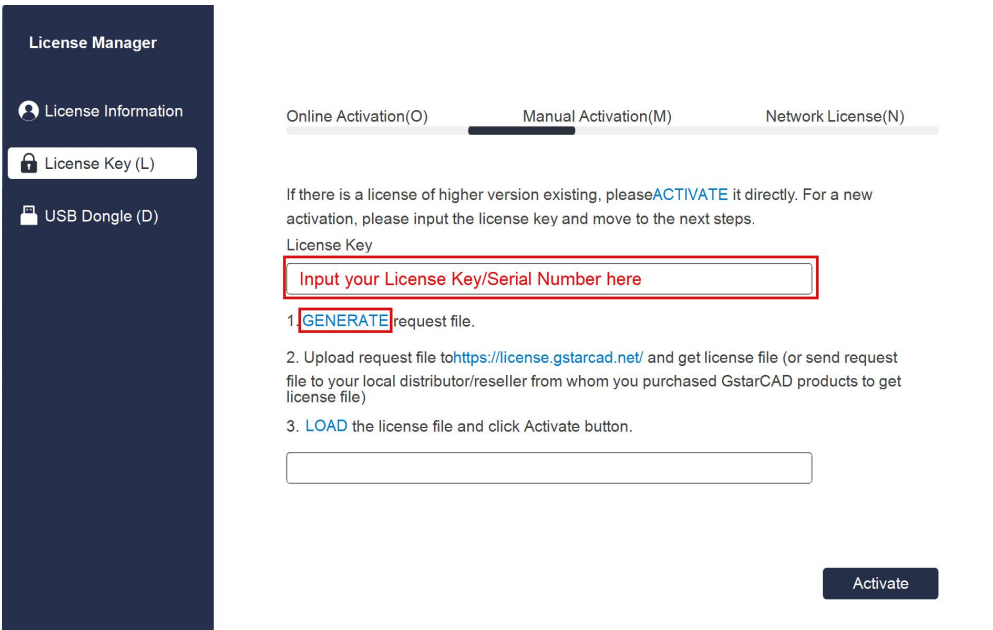
### 2.1.2. Manual Activation

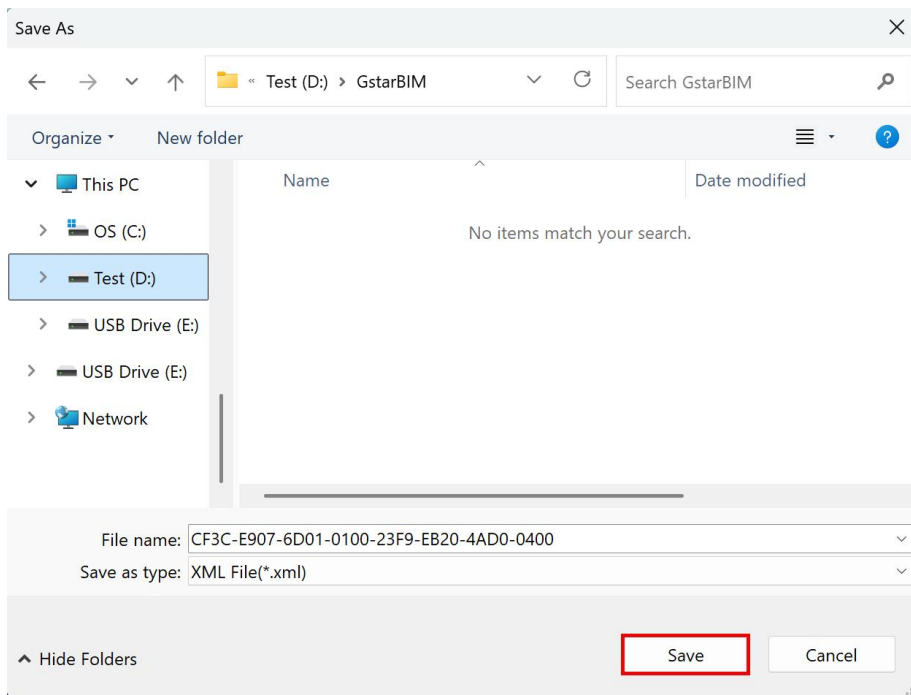
**Instruction:** If your computer is not connected to the internet, you can use activation file (xml file) to activate your GstarBIM 2027 manually.

- 1) Click **License Key(L)** → **Manual Activation (M)** fddfd



2) Input your license key (serial number) and click the **GENERATE** button to get the request file and save it.





3) There are 2 ways to acquire license file with the saved request file:

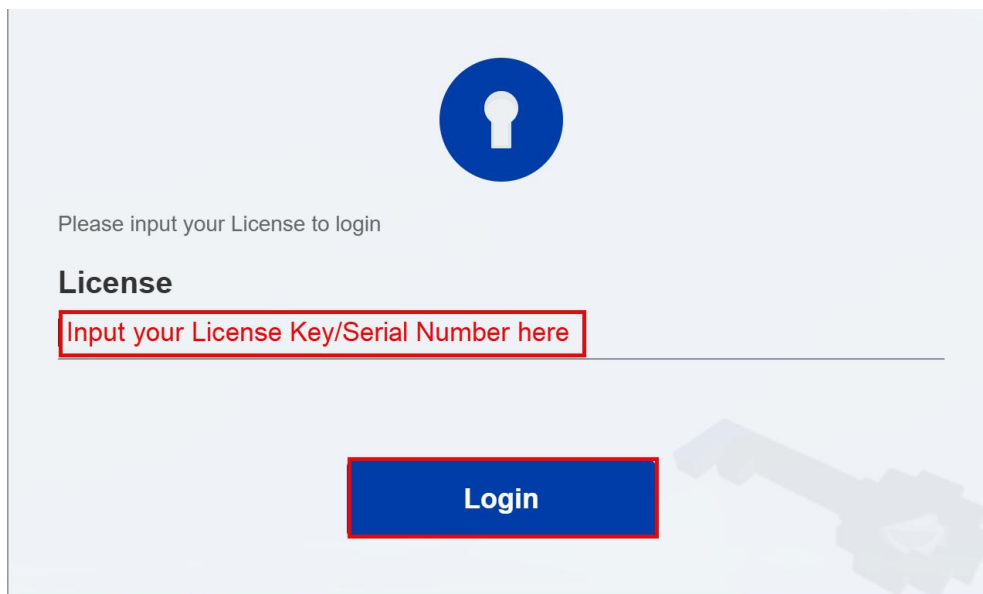
**Option 1: E-mail**

You can send the request file from any computer with internet connected to your local GstarBIM distributor/reseller from whom you purchased GstarBIM products to get the license file.

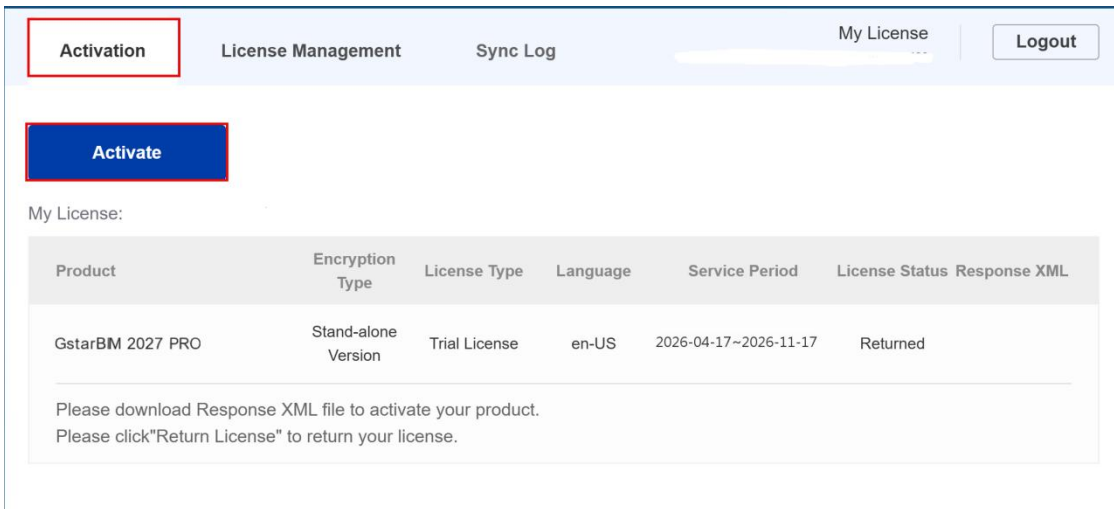
**Option 2: Online Service**

You can access GstarCAD online service center from any computer with internet connected to download the license file.

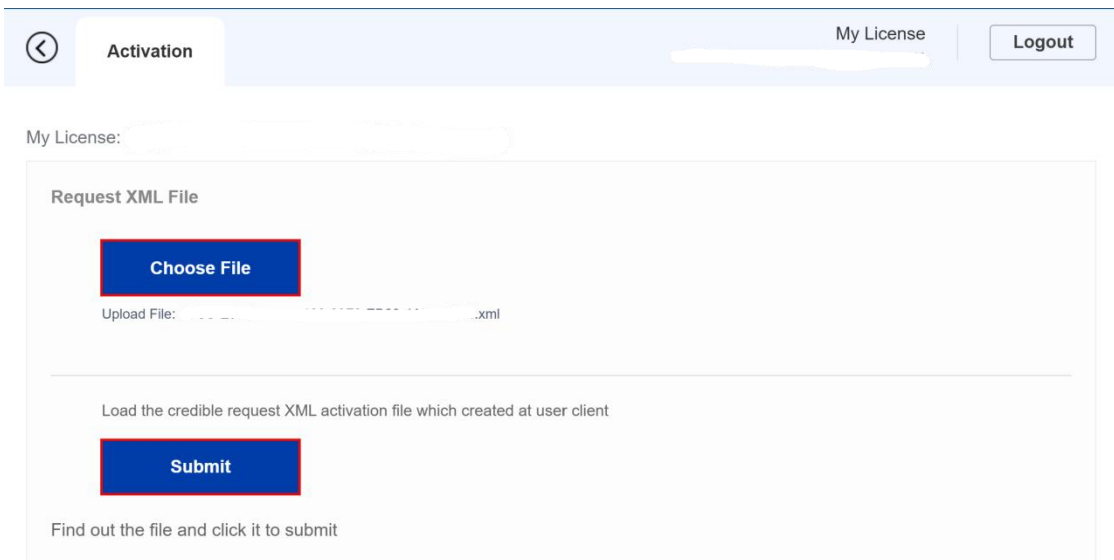
- (1) Login to GstarCAD online service center: <https://license.gstarcad.net/>
- (2) Input your license key (serial number) and click the **Login** button to continue.



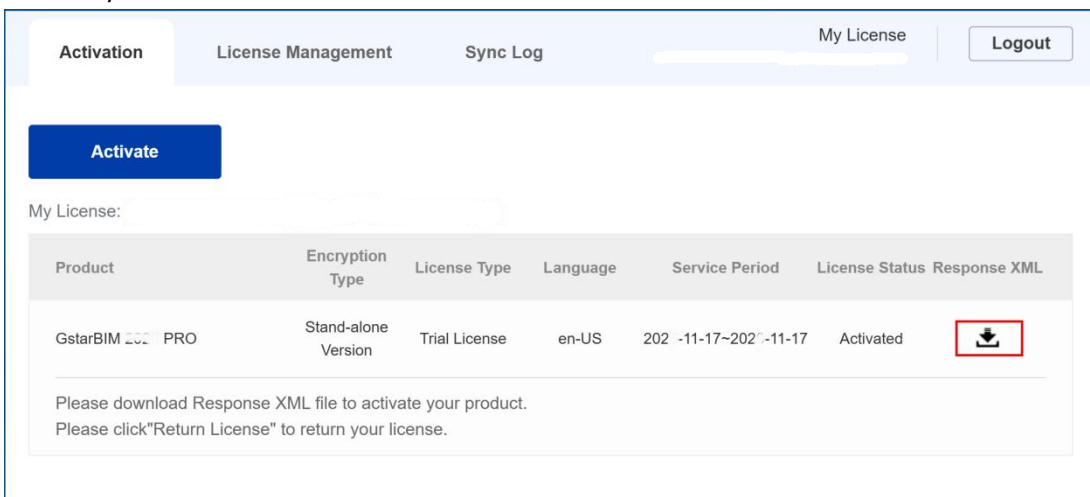
(3) In Activation tab, click the **Activate** button to continue.



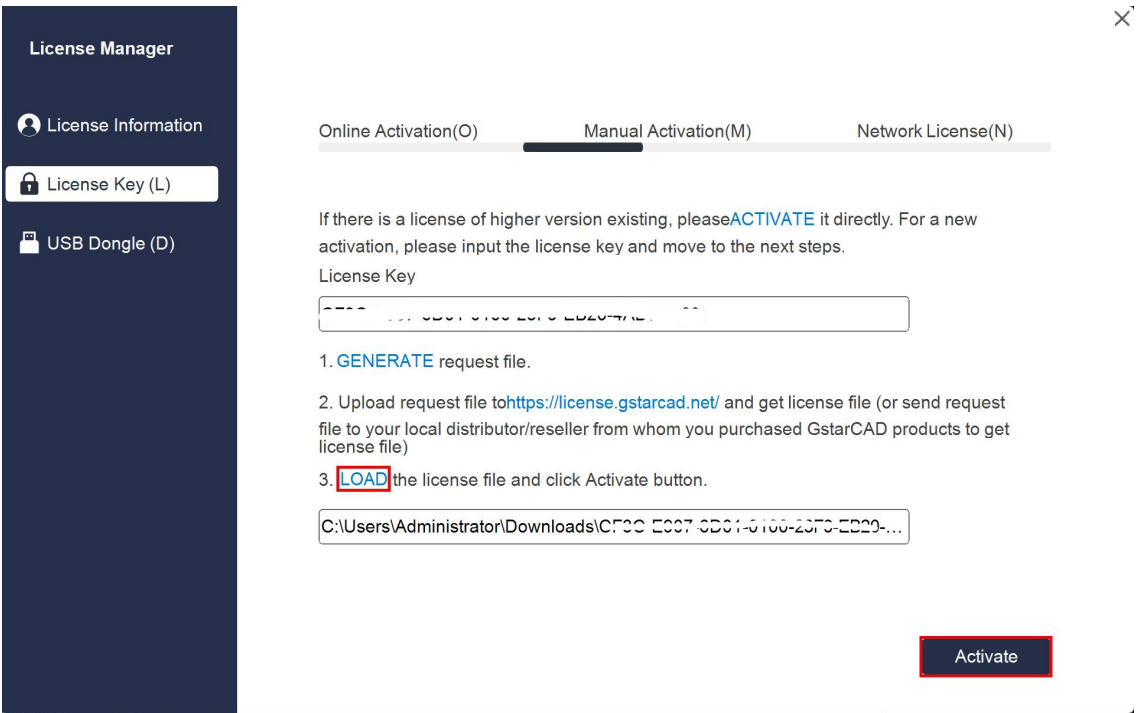
(4) Click the **Choose File** button and select the request file you have saved and click the **Submit** button to continue.



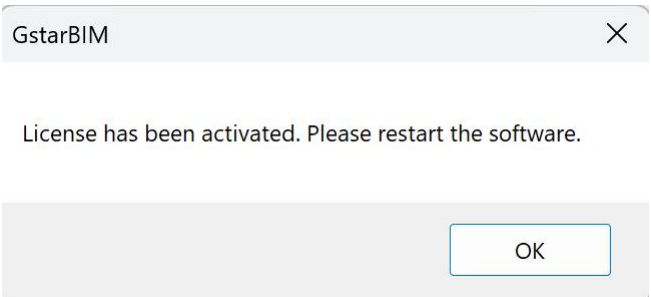
(5) Click the **Download** button and save the license file (Response XML File). We recommend you to store the license file to your USB flash drive



- 4) Back to your computer and find out GstarBIM License Manager from Help-Register in GstarBIM 2027, please click the **LOAD** button and select the license file you have just downloaded and saved from another computer, and then click the **Activate** button.



- 5) After a few seconds the following message window appears. Click the **OK** button to finish the activation. Then restart your GstarBIM.



## 2.2. Network License Key

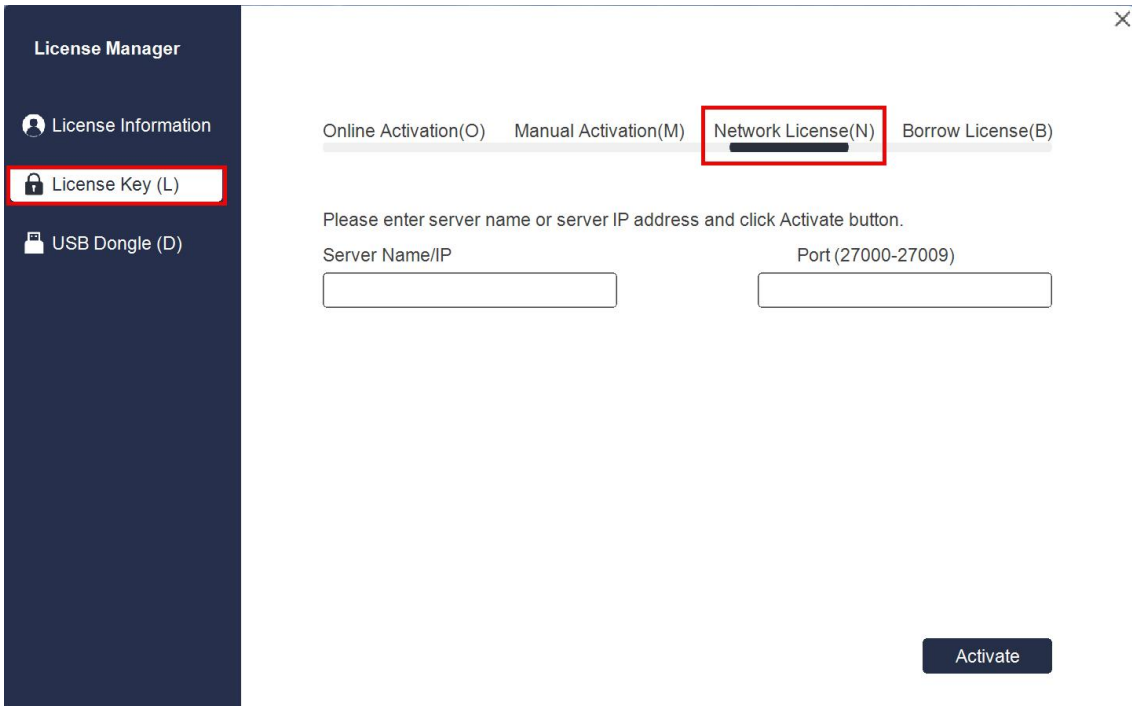
GstarBIM Network enables you to share a number of GstarBIM licenses on your LAN. It gives flexibility of license floating among a working group. Before the network activation, you need to specify server computer to install **GstarCAD Network License Manager** to manage your network license.

For the detail, please refer to “**GstarCAD Network License Manager Guide**”

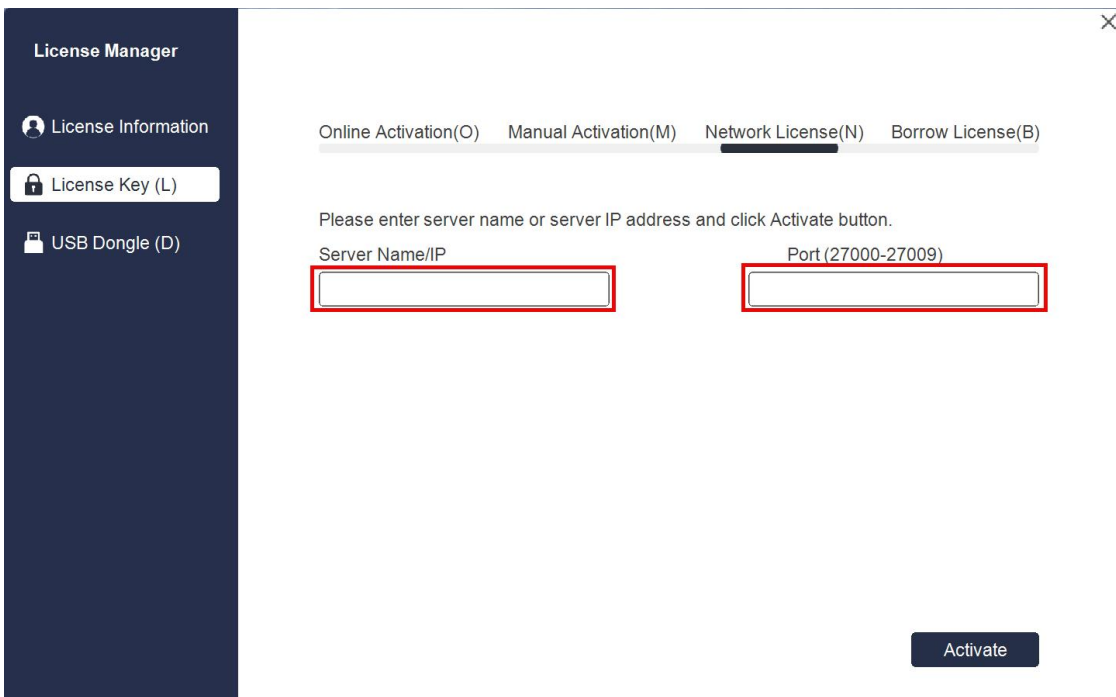
After GstarBIM network license key has been activated on the server computer, any client with the valid server IP and License Port can access to the server in the same LAN.

Please follow the steps below to activate your GstarBIM Network on client side:

1. Click **Network License (N)**



2. Specify server IP address and the License Port, click **Activate** button to activate your software on client side.



### 3. USB Dongle Activation

You need to connect USB dongle to your computer to activate your GstarBIM 2027, or you can get a network license from an existing USB network license server. .

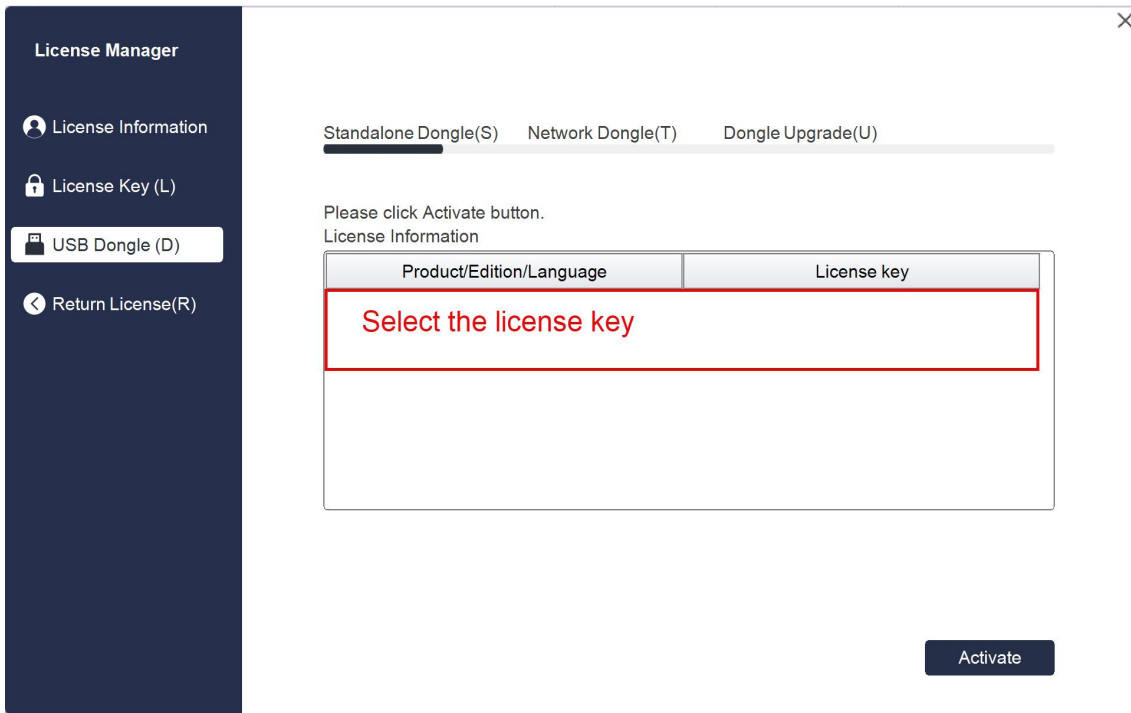
**Standalone Dongle:** Activate GstarBIM 2027 via USB dongle connected to the computer.

**Network Dongle:** Get license from a USB network license server.

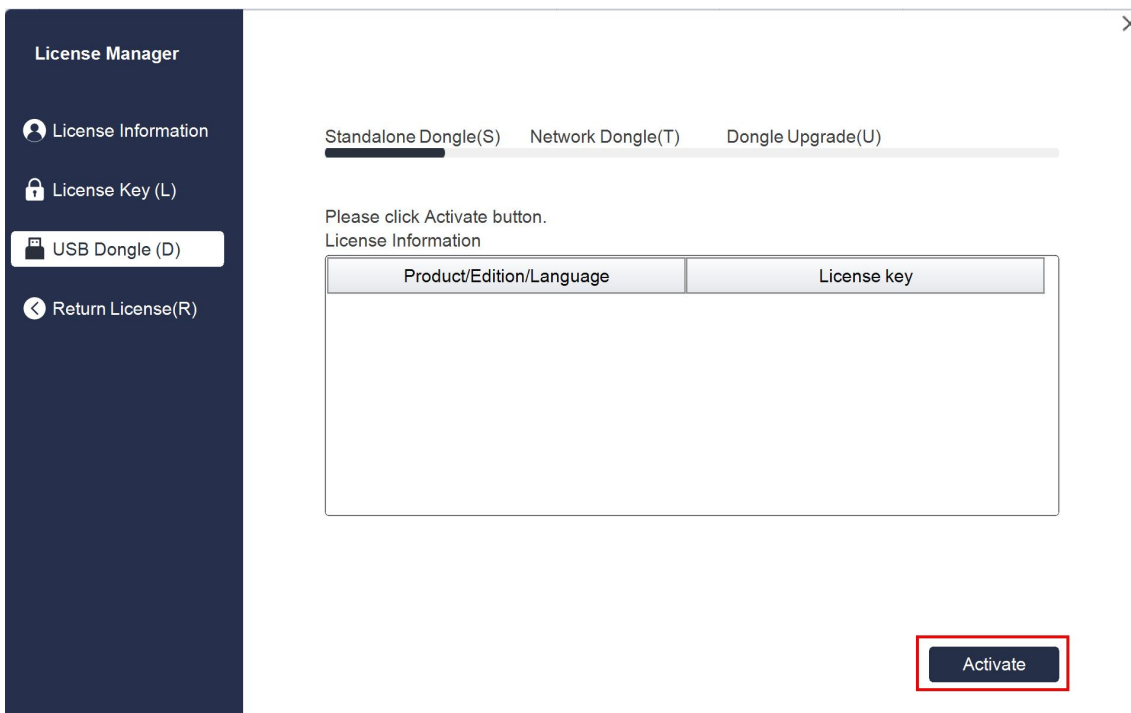
#### 3.1. Standalone USB Dongle

1. Insert your USB dongle to your computer.

- Run GstarBIM License Manager which you can access from **Help** → **Register** tab in GstarBIM 2027. Click **USB Dongle(D)** → **Standalone Dongle(S)**



- Then click **Activate** button to finish the standalone dongle activation. Then restart your GstarBIM 2027.

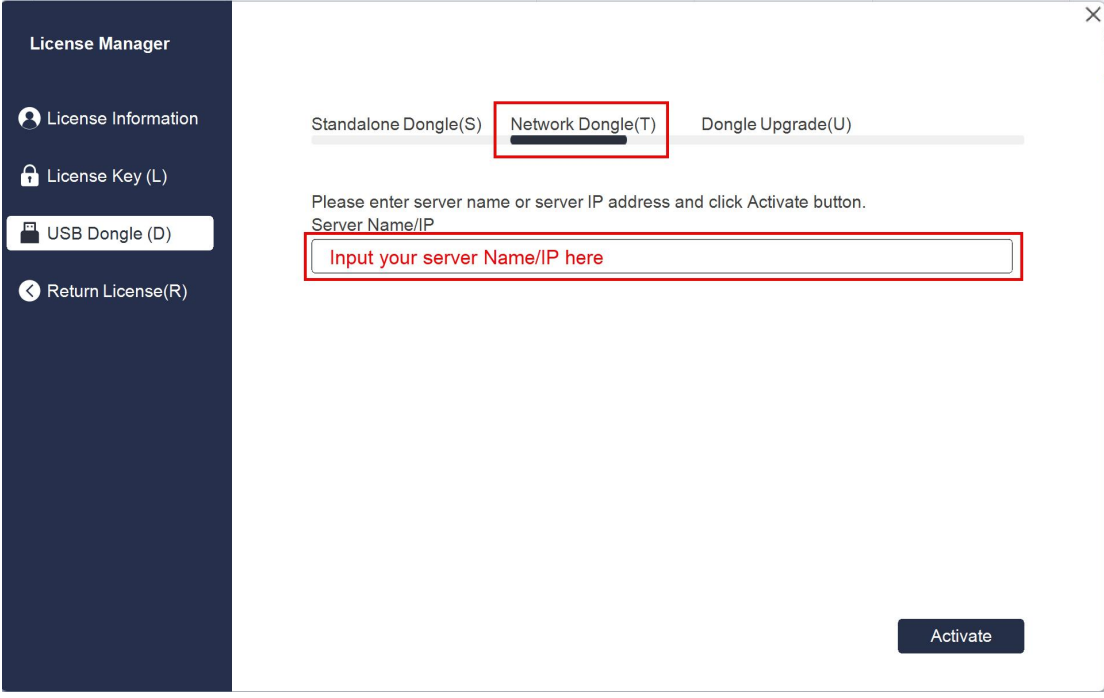


### 3.2. Network USB Dongle

**Instruction:** Please make sure the Network Dongle drive is installed in the server computer.

- Insert GstarBIM network USB Dongle into the server computer. (Any computer in the LAN).

- Run GstarBIM License Manager which you can access from **Help** → **Register** tab in GstarBIM 2027. Click **USB Dongle(D)** → **Network Dongle(N)**.
- Input the server Name/IP and click **Activate** button to activate on client side.



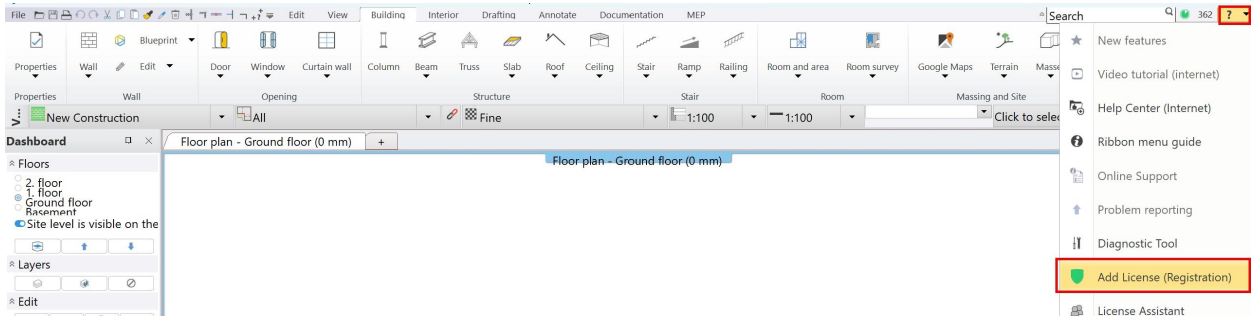
**Note:** The network on server computer cannot be disconnected during use. If it is disconnected and the network Dongle cannot be found, an abnormality may occur and the drawing cannot be saved.

#### 4. Standalone License Key Return

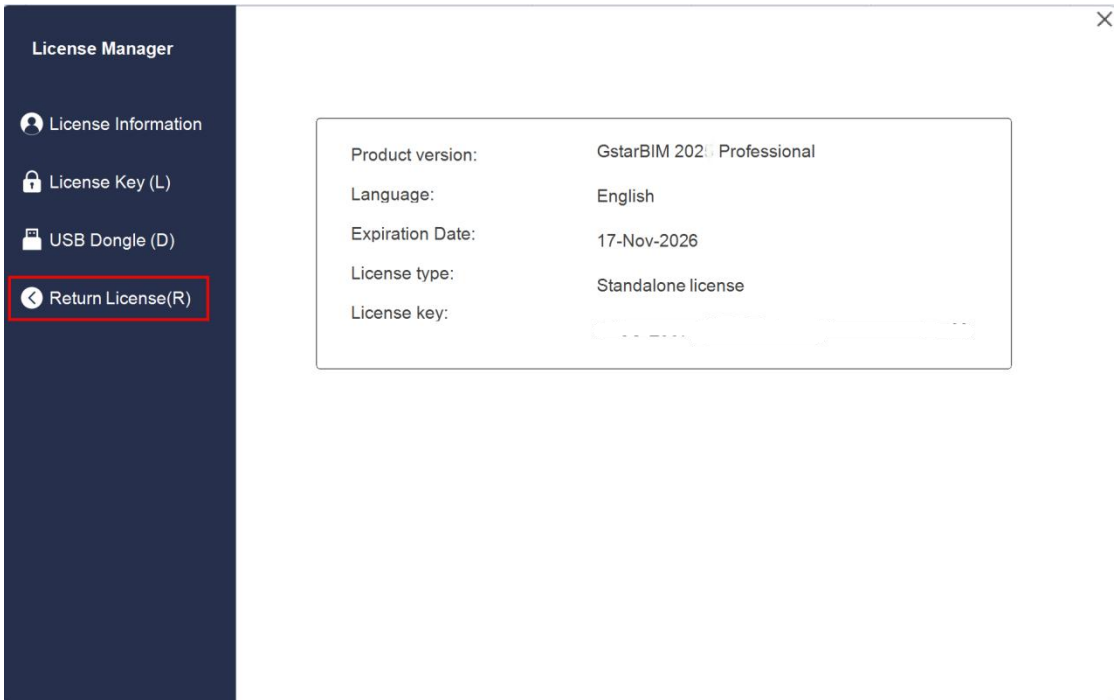
When you are going to change another computer or upgrade your system, to ensure you can use this software again after you changing the system, you need to return license before you change your system, hard disk or main board.

**Online Return:** Make sure your computer connect to the internet. You can return your license key online

**Manual Return:** There is no need of internet connection. You can manually return your license key



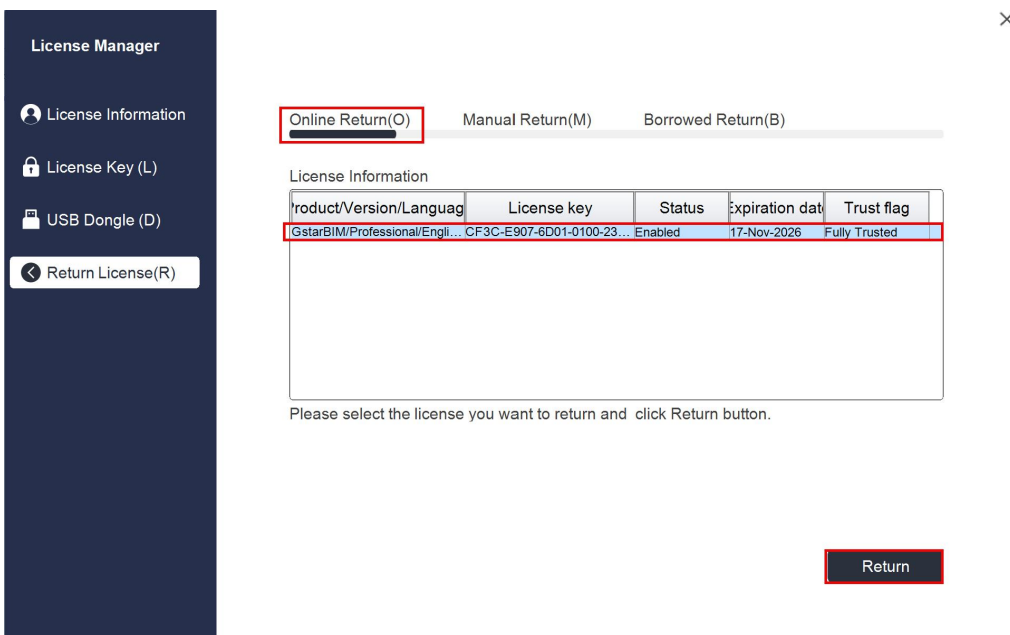
Run GstarBIM License Manager which you can access from **Help** → **Register** tab in GstarBIM 2027. Then the following window opens. Then click **Return License (R)**.



## 4.1. Online Return

**Instruction:** make sure your computer connect to the internet.

1. Click **Online Return (O)** and select the license to be returned and click the **Return** button.



2. After a few seconds, the "Return the license successful" window opens. Click **OK** button to close the window. Then you can see the license you have selected to return has disappeared from License information.

GstarBIM ✕

Return license successfully.

OK

## 4.2. Manual Return

If your computer is not connected to the internet, you can return the license key manually.

1. Click **Manual Return (M)** and select the license to be returned.

The screenshot shows the License Manager application window. On the left is a dark sidebar with menu items: License Information, License Key (L), USB Dongle (D), and Return License(R). The main area has three tabs: Online Return(O), Manual Return(M) (highlighted with a red box), and Borrowed Return(B). Below the tabs is a table titled 'License Information' with the following data:

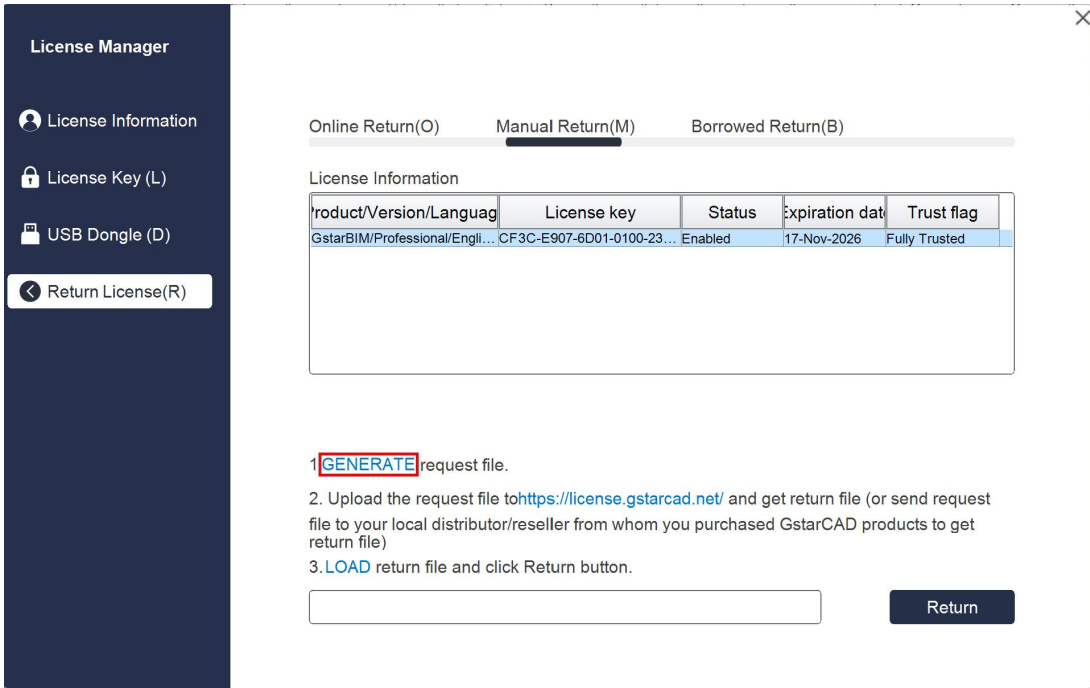
Product/Version/Languag	License key	Status	Expiration dat	Trust flag
GstarBIM/Professional/Engli...	...	Enabled	17-Nov-2026	Fully Trusted

Below the table are instructions:

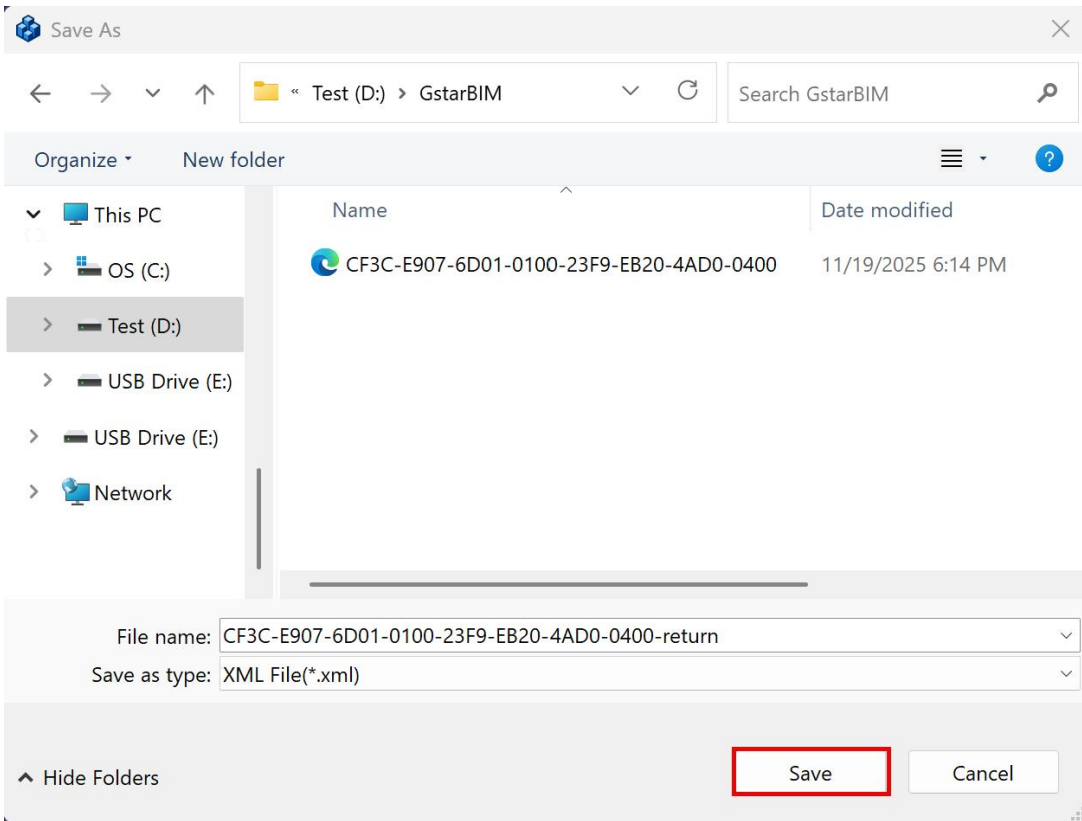
1. **GENERATE** request file.
2. Upload the request file to <https://license.gstarcad.net/> and get return file (or send request file to your local distributor/reseller from whom you purchased GstarCAD products to get return file)
3. **LOAD** return file and click Return button.

At the bottom, there is an empty text input field and a dark 'Return' button.

2. Click **GENERATE** button to get the Request file.



3. Save the Request file with the extension -return.



4. Click **OK** button after the Request file saved.

5. There are 2 ways to return the license.

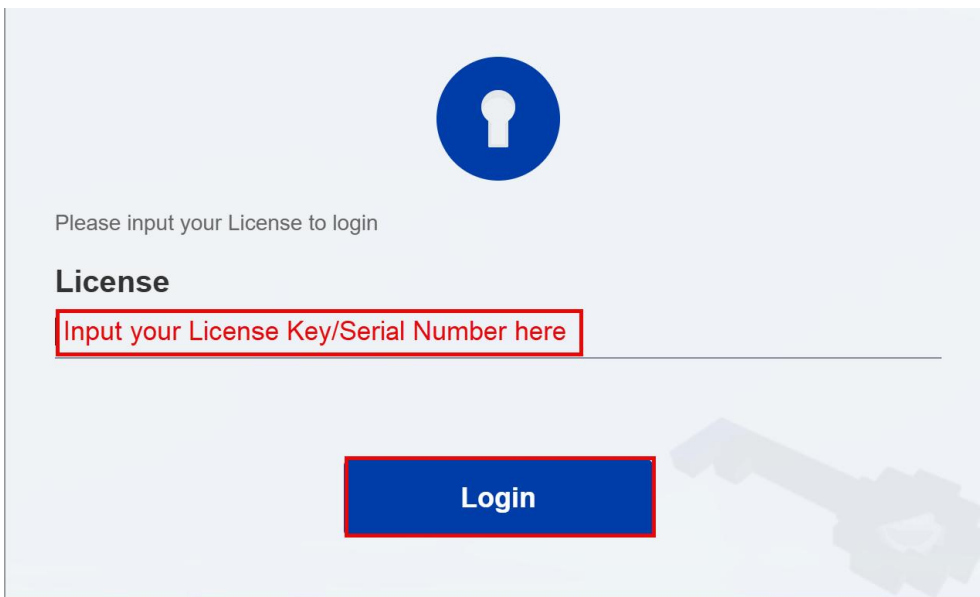
**Option 1: E-mail**

You can send the return request file from any computer with internet connected to your local distributor/reseller from whom you purchased GstarBIM products to get the return file.

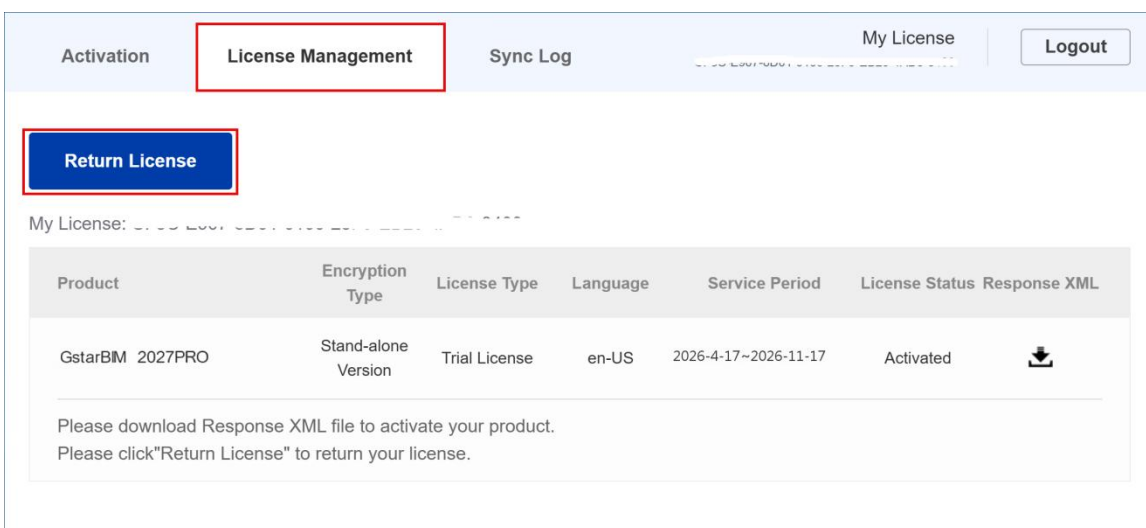
**Option 2: Online Service**

You can access GstarCAD online service center from any computer with internet connected to download the license file.

1. Access the link <https://license.gstarcad.net/> and login with the GstarBIM license key.



2. Click **License Management** tab, and click **Return License** button.



3. Choose the request XML file you saved and Click **Submit** button to upload the request file.

My License: C: \Users\user\AppData\Local\Temp\11222222-2222-2222-2222-22222222-return.xml

**Request XML File**

[Choose File](#)

Upload File: C:\Users\user\AppData\Local\Temp\11222222-2222-2222-2222-22222222-return.xml

---

Load the credible request XML returned file which created at user client

[Submit](#)

Find out the file and click it to submit

4. **Download** the Response XML from License Management tab.

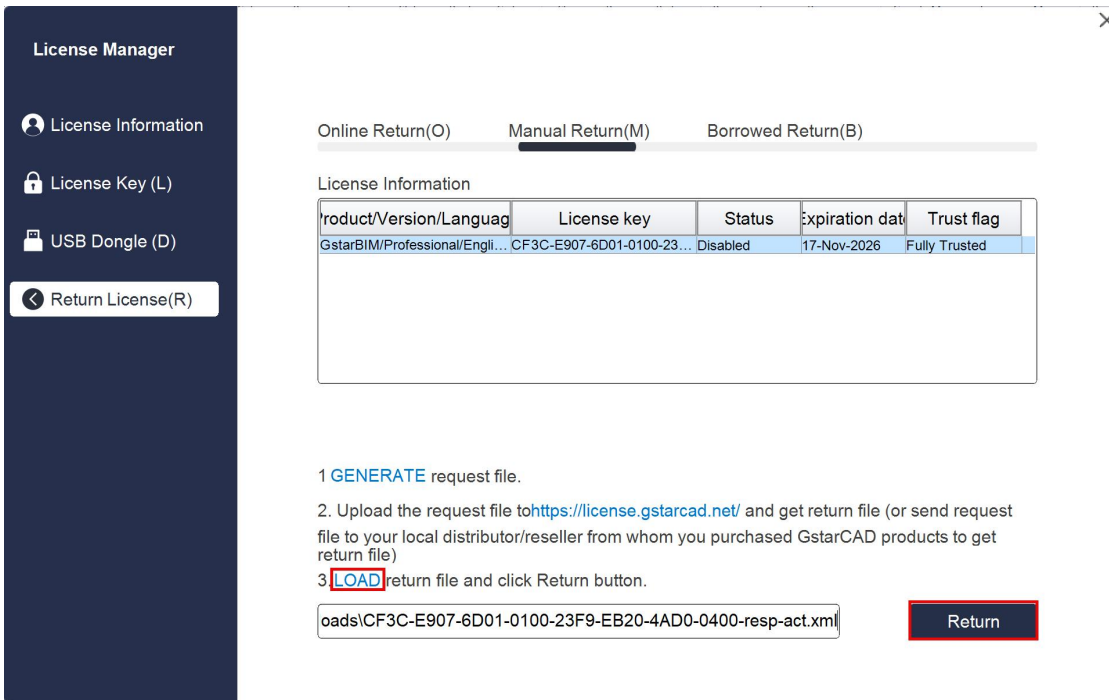
[Return License](#)

My License: C: \Users\user\AppData\Local\Temp\11222222-2222-2222-2222-22222222-return.xml

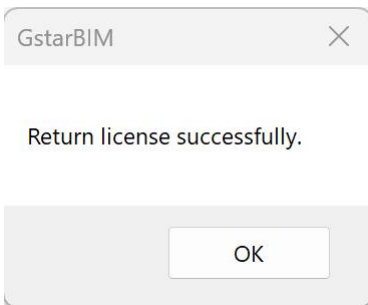
Product	Encryption Type	License Type	Language	Service Period	License Status	Response XML
GstarBIM 2027PRO	Stand-alone Version	Trial License	en-US	2026-4-17~2026-11-17	Returned	<a href="#">Download</a>

Please download Response XML file to activate your product.  
Please click"Return License" to return your license.

5. Go back to GstarBIM license Manager, Click **.LOAD** to load the -resp-return.xml file and click **Return** button to return GstarBIM license.



6. Then you can see the license key disappeared in the License Information list.



## 5. Network Licenses Borrow and Return

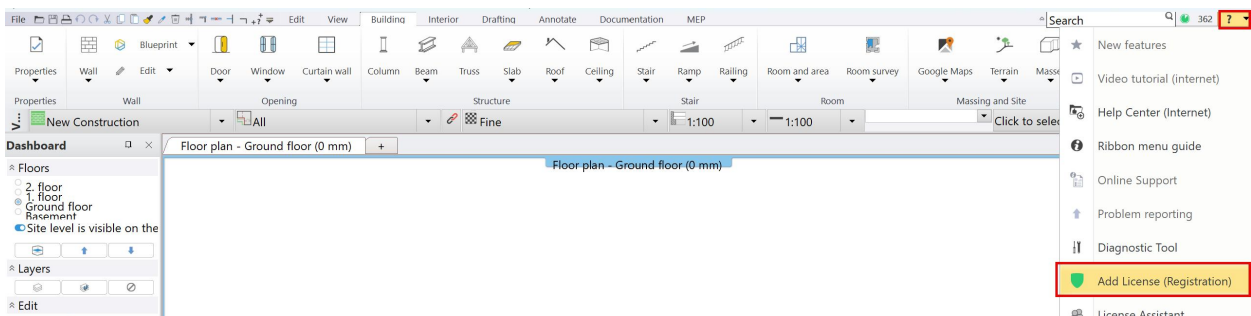
What is more, GstarBIM 2027 provides the function that you can borrow and return license from server at user client. In some special case, you need to transfer one or more than one nodes to individual computer. For example, you need to activate GstarBIM 2027 on a laptop for a certain time. It is great flexibility to use this function.

There are 2 steps to use it: **Borrow License** and **Borrowed Return**.

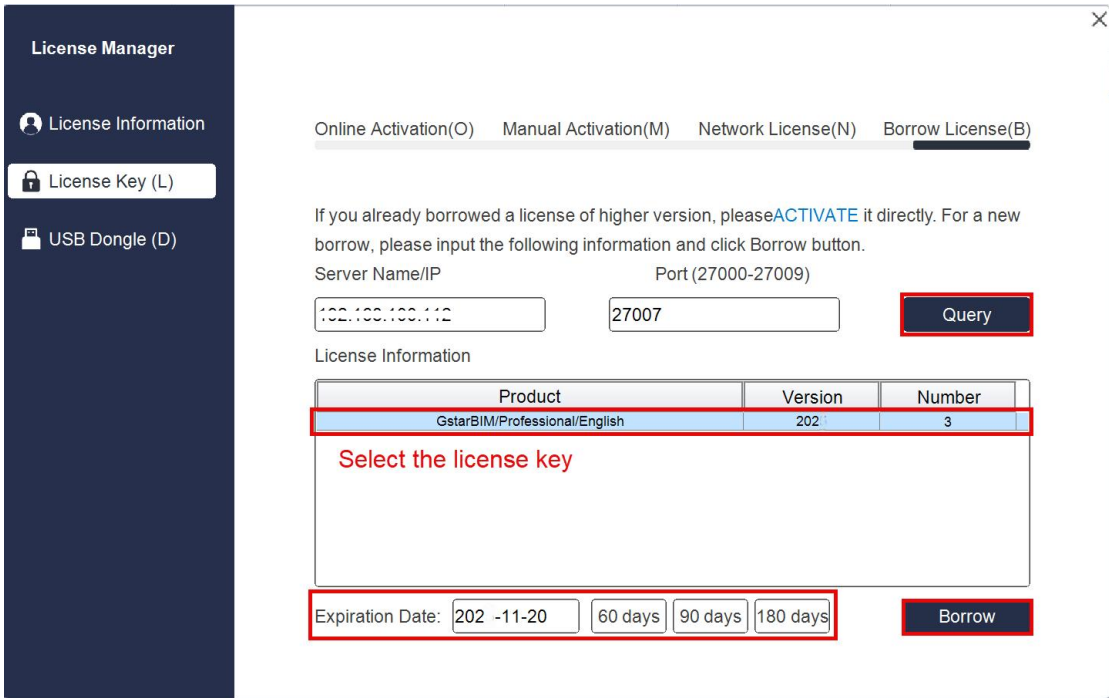
### Requirement conditions:

1. Ensure GstarBIM 2027 has to be installed on the computer.
2. It has to be in a same local area network, and connect to server.

Click **Help** → **Register** to open GstarBIM License Manager in GstarBIM 2027.



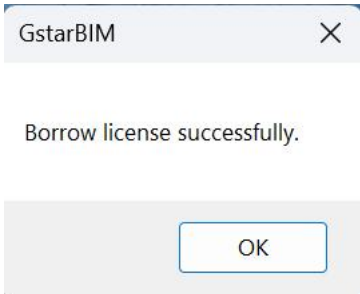




**Server Name or IP:** Input the server IP address (like 192.168.0.166).

**Expiration Date:** Date to borrow and return. You just only need to fill in the date you return because it is counted from the date when you Borrow click, or you can choose or set the duration.

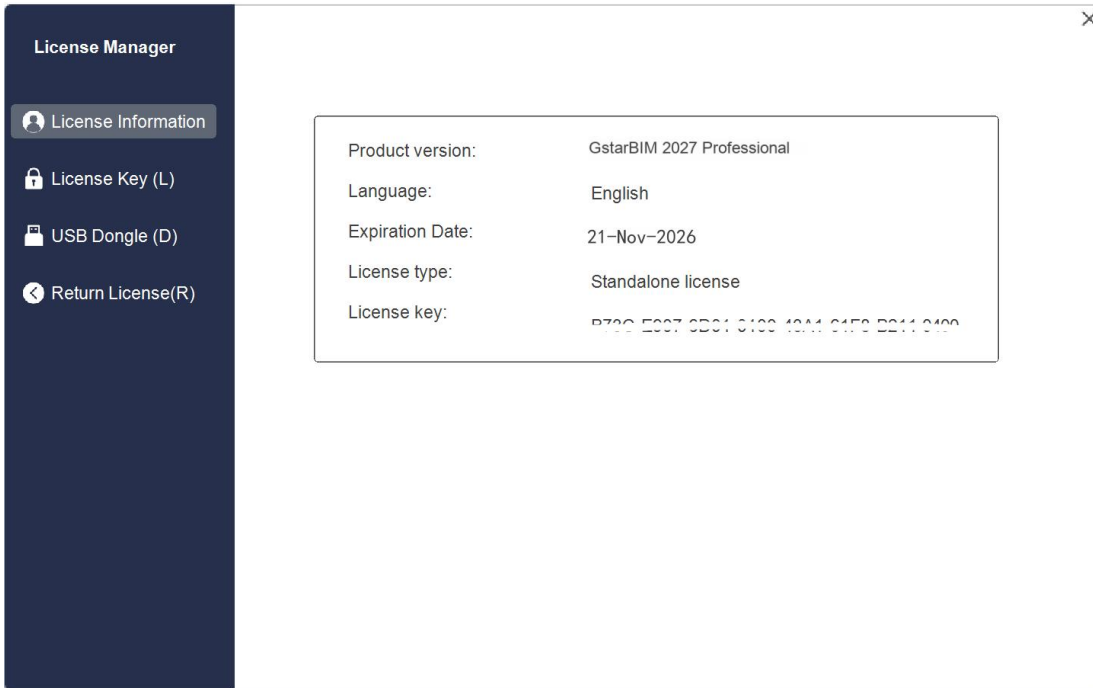
3. And then you can see the following message that means you successfully borrow the license. Click **OK** button and restart your software to finish the process.



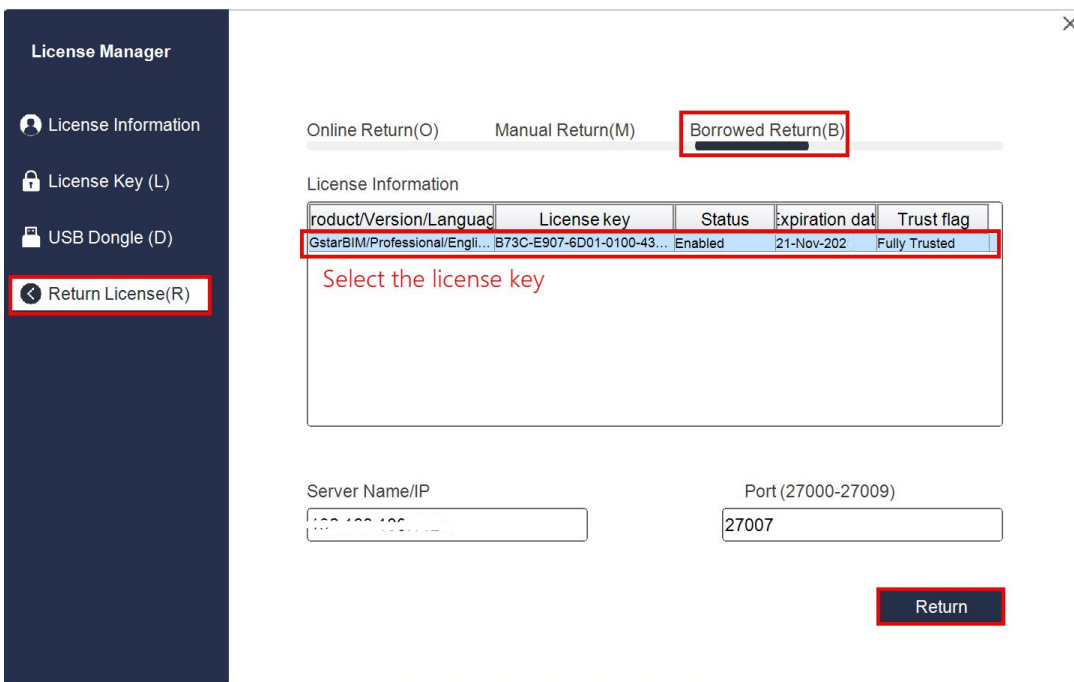
## 5.2. Borrowed Return

It is better to return the borrowed node to server if you do not need it.

1. Open GstarBIM License Manager which you can access from Help menu-Register



2. click **Return License (R)** , **Borrowed Return (B)** and select the license you want to return. Then Click **Return** button.



3. Click **OK** button to finish the license returning and you can see the license you returned disappears.

